

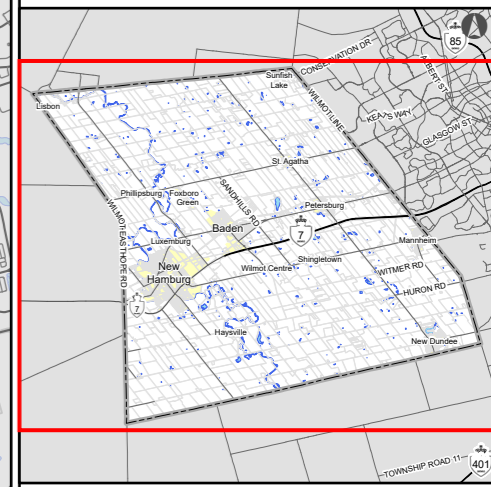
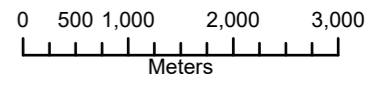


DEPARTMENT OF INFRASTRUCTURE SERVICES

Wilmot Traffic Study Locations

Township of Wilmot

August 2024

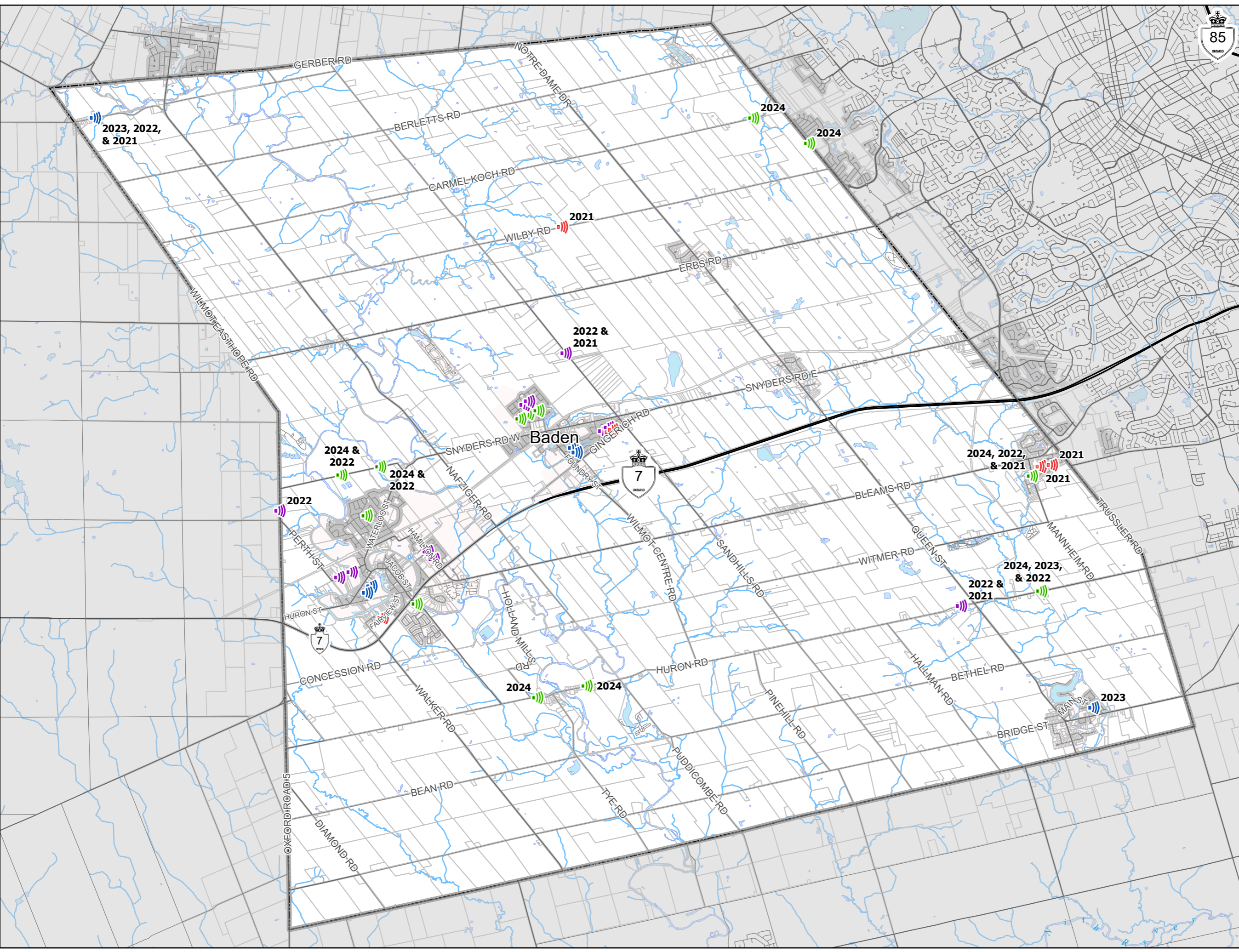


Legend

Location of Most Recent Traffic Study

-  2024
-  2023
-  2022
-  2021

The map is created from a subset of data from the Wilmot Geographic Information System (GIS) database. The Township of Wilmot makes no claims, no representations, and no warranties, express or implied, concerning the validity (express or implied), the reliability or the accuracy of the GIS data and GIS data products furnished by the Township, including the implied validity of any uses of such data.



Document Path: W:\PWE Mapping Requests\Internal\2024\08-28-Speed Sign Report Maps\MAP-2024-08-28-Speed Sign Locations\MAP-2024-08-28-Speed Sign Locations.aprx

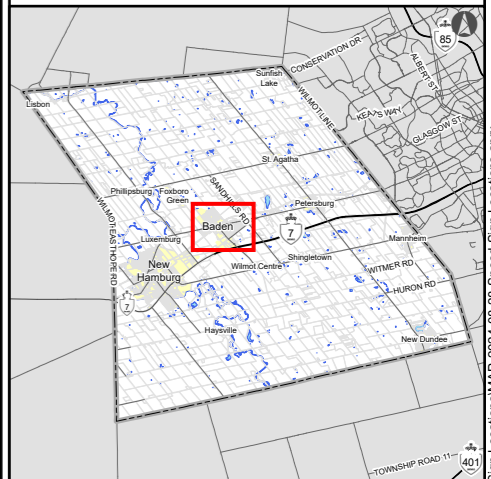
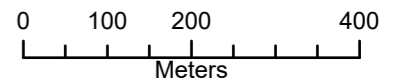


DEPARTMENT OF INFRASTRUCTURE SERVICES

Wilmot Traffic Study Locations

Baden

August 2024



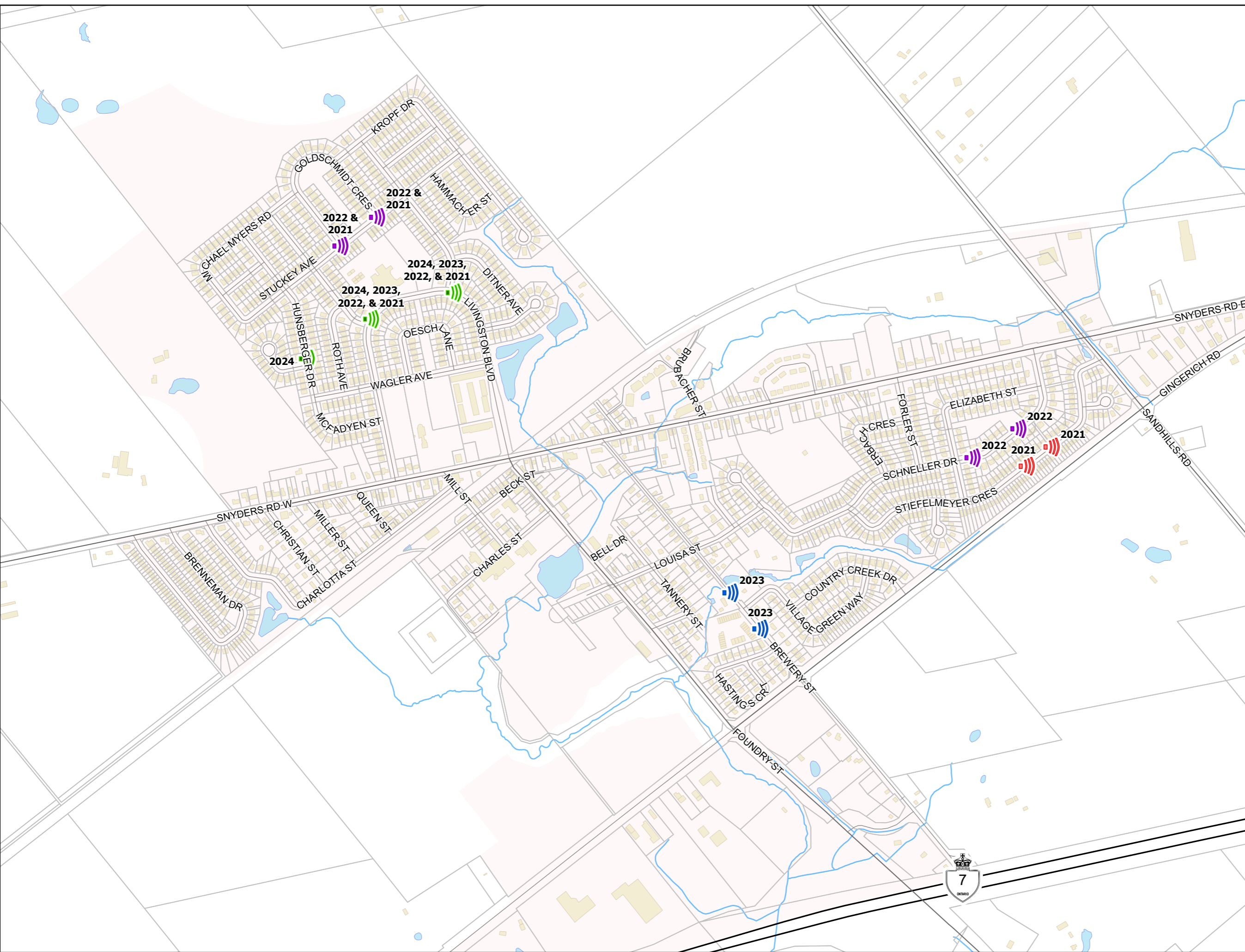
Legend

Location of Most Recent Traffic Study

-  2024
-  2023
-  2022
-  2021

The map is created from a subset of data from the Wilmot Geographic Information System (GIS) database. The Township of Wilmot makes no claims, no representations, and no warranties, express or implied, concerning the validity (express or implied), the reliability or the accuracy of the GIS data and GIS data products furnished by the Township, including the implied validity of any uses of such data.

Document Path: W:\PWE Mapping Requests\Internal\2024\08-28-Speed Sign Report Maps\MAP-2024-08-28-Speed Sign Locations.aprx



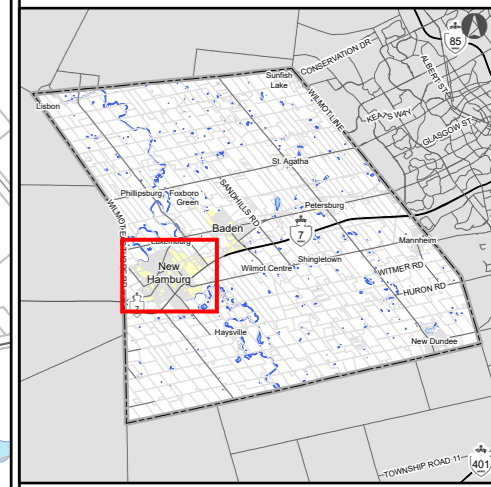
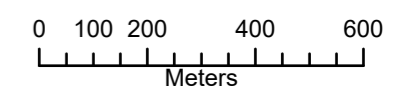


DEPARTMENT OF INFRASTRUCTURE SERVICES

Wilmot Traffic Study Locations

New Hamburg

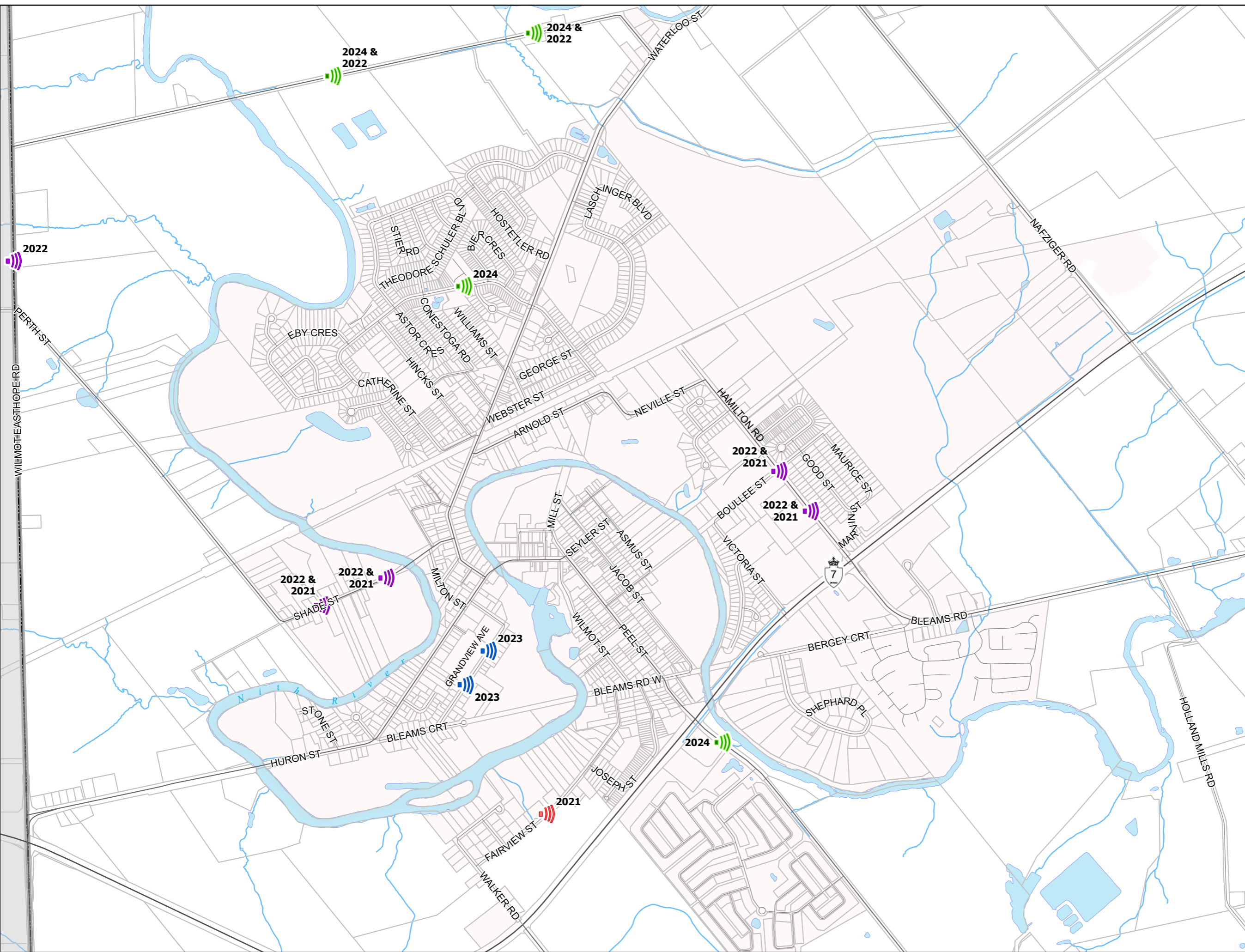
August 2024



Legend

Location of Most Recent Traffic Study

-  2024
-  2023
-  2022
-  2021



The map is created from a subset of data from the Wilmot Geographic Information System (GIS) database. The Township of Wilmot makes no claims, no representations, and no warranties, express or implied, concerning the validity (express or implied), the reliability or the accuracy of the GIS data and GIS data products furnished by the Township, including the implied validity of any uses of such data.