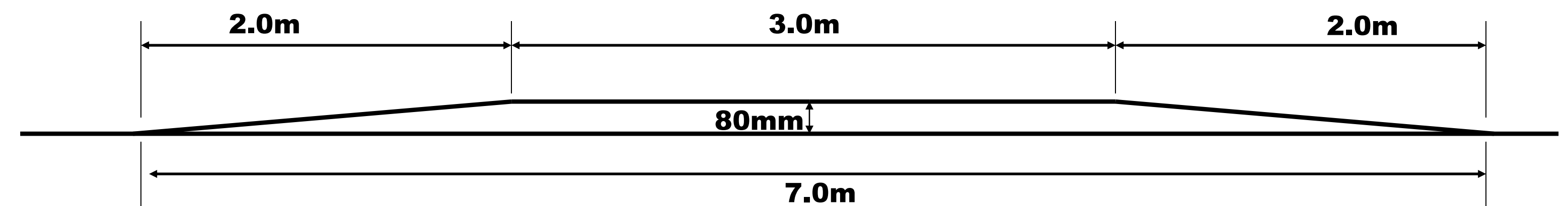




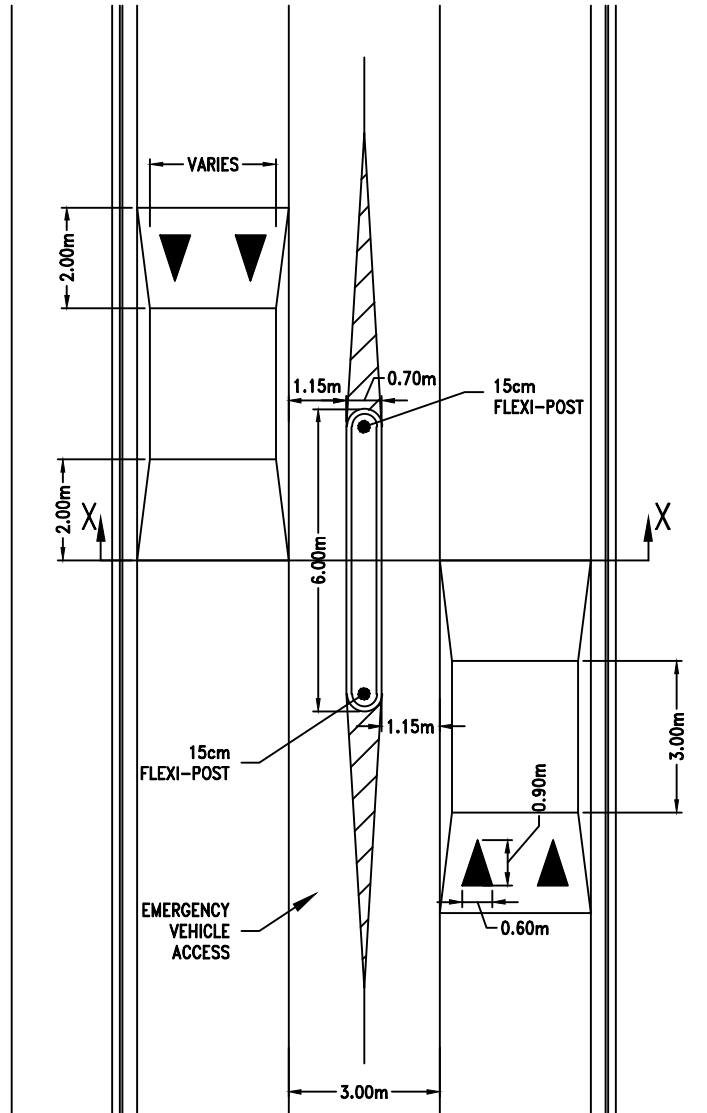
The Corporation Of The **CITY OF KITCHENER**

Development and Technical Services – Engineering – Transportation Planning

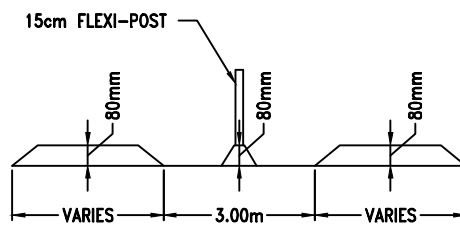
Modified Speed Hump Design



***Not to Scale**



PLAN VIEW



SECTION X-X

Plotted by: Nkoletic Filename: P:\P\54351\100\54351-100.dwg



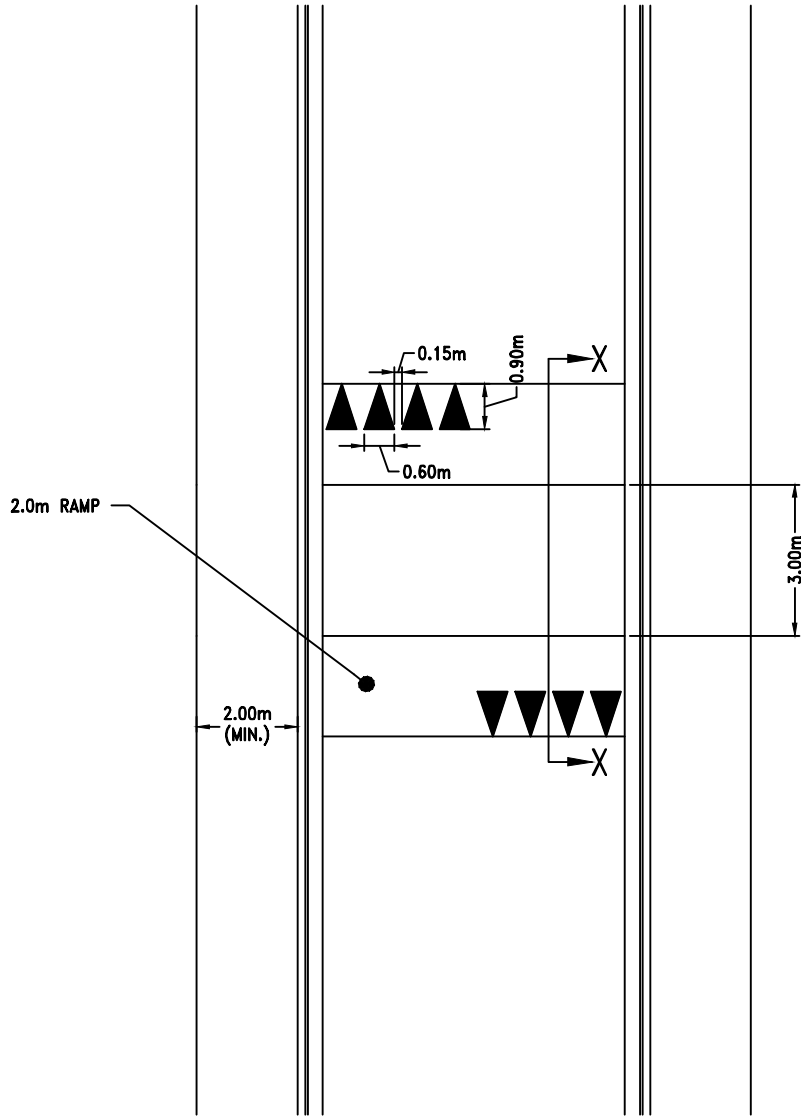
DRAWING TITLE:

SPEED CUSHION

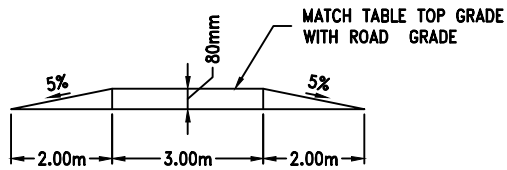
LAST REVISED
December 15, 2023

PLOT DATE
December 15, 2023

DWG No.
54351-100.dwg



PLAN VIEW



SECTION X-X

Plotted by: Nkoletic Filename: P:\P\54351\100\54351-100.dwg



DRAWING TITLE:

MODIFIED SPEED HUMPS

LAST REVISED
December 15, 2023

PLOT DATE
December 15, 2023

DWG No.
54351-100.dwg



#1: Speed Cushion

#2: Speed Hump

#3: Speed Cushion

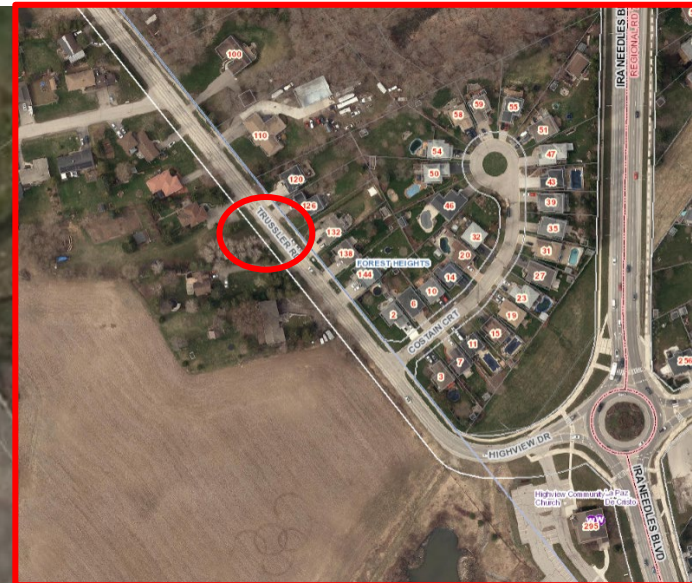
Trussler Rd - OVERVIEW
Highland Rd W/ Snyders Rd E
To
Ira Needles Blvd

#1 – Speed Cushion

Trussler Rd- #132/#126
(ACROSS FROM CHURCH)

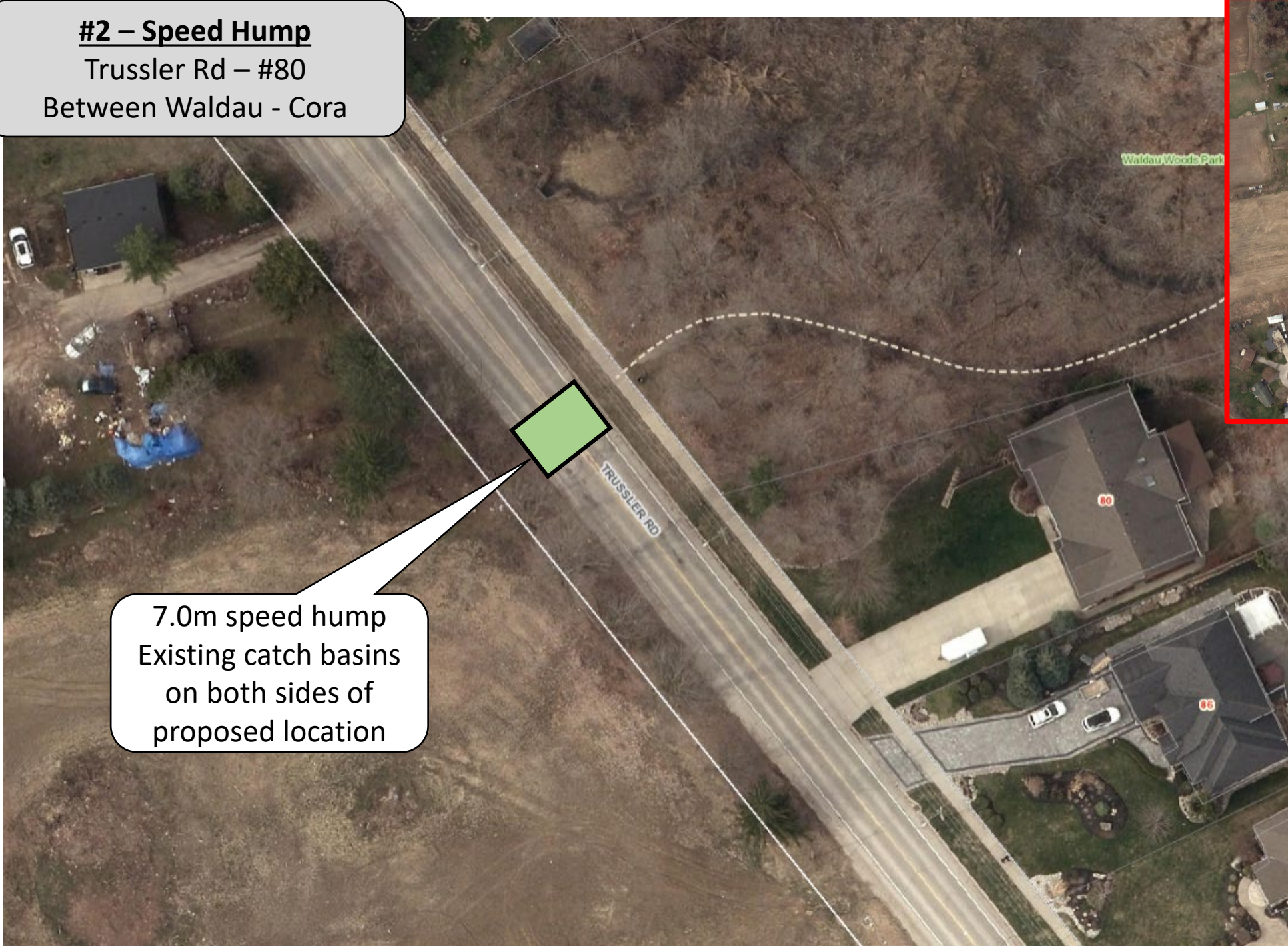


Mountable
Median with
flexible stakes



#2 – Speed Hump

Trussler Rd – #80
Between Waldau - Cora



7.0m speed hump
Existing catch basins
on both sides of
proposed location

#3 – Speed Cushion

Trussler Rd
(Just south of industrial
Parking lot)

SPEED
CUSHION

Mountable
Median with
flexible stakes

