

Official Plan Amendment Application / Zone Change Application 01/23,

Monday May 29, 2023

Kae Elgie

88 Fountain Street, Waterloo ON



Charitable Research Reserve

0 100 200
Meters



Official Plan Amendment Application 01/23
Zone Change Application 01/23

Wilmot Line

585
Retained Lands
1.2ha

#567
Retained Lands
5.66ha

Severed Lands to be donated to
rare Charitable Research Reserve
94.67ha

#1236
Retained
Land
4.9ha

Carmel Koch Road

HEALTH BENEFITS OF NATURE



Below you'll find hundreds of free research studies, news articles, and case studies, organized by adult and children health topics:

ADULTS

- [Alzheimer's and Dementia](#)
- [Asthma & Respiratory Disorders](#)
- [Cognition](#)
- [Depression](#)
- [General Health](#)
- [Heart Health](#)
- [Hospital Recovery](#)
- [Obesity](#)
- [Post-Traumatic Stress Disorder \(PTSD\)](#)
- [Stress](#)
- [Stroke](#)
- [Type II Diabetes](#)
- [Well-Being](#)

CHILDREN

- [ADD/ADHD](#)
- [Autism Spectrum Disorders](#)
- [Cognition](#)
- [Depression](#)
- [General Health](#)
- [Nature Deficit Disorder](#)
- [Obesity](#)
- [Stress](#)
- [Type II Diabetes](#)
- [Well-Being](#)

A special thanks to our expert reviewers for their guidance: [Dr. Ming \(Frances\) Kuo](#), PhD, Associate Professor, University of Illinois at Urbana-Champaign; [Naomi Sachs](#), ASLA, Founding Director, [Therapeutic Landscapes Network](#) and [Naomi Sachs Design](#); [Jerry Smith](#), FASLA, Principal, [Smith GreenHealth Consulting](#).

Wilmot Official Plan April 2019

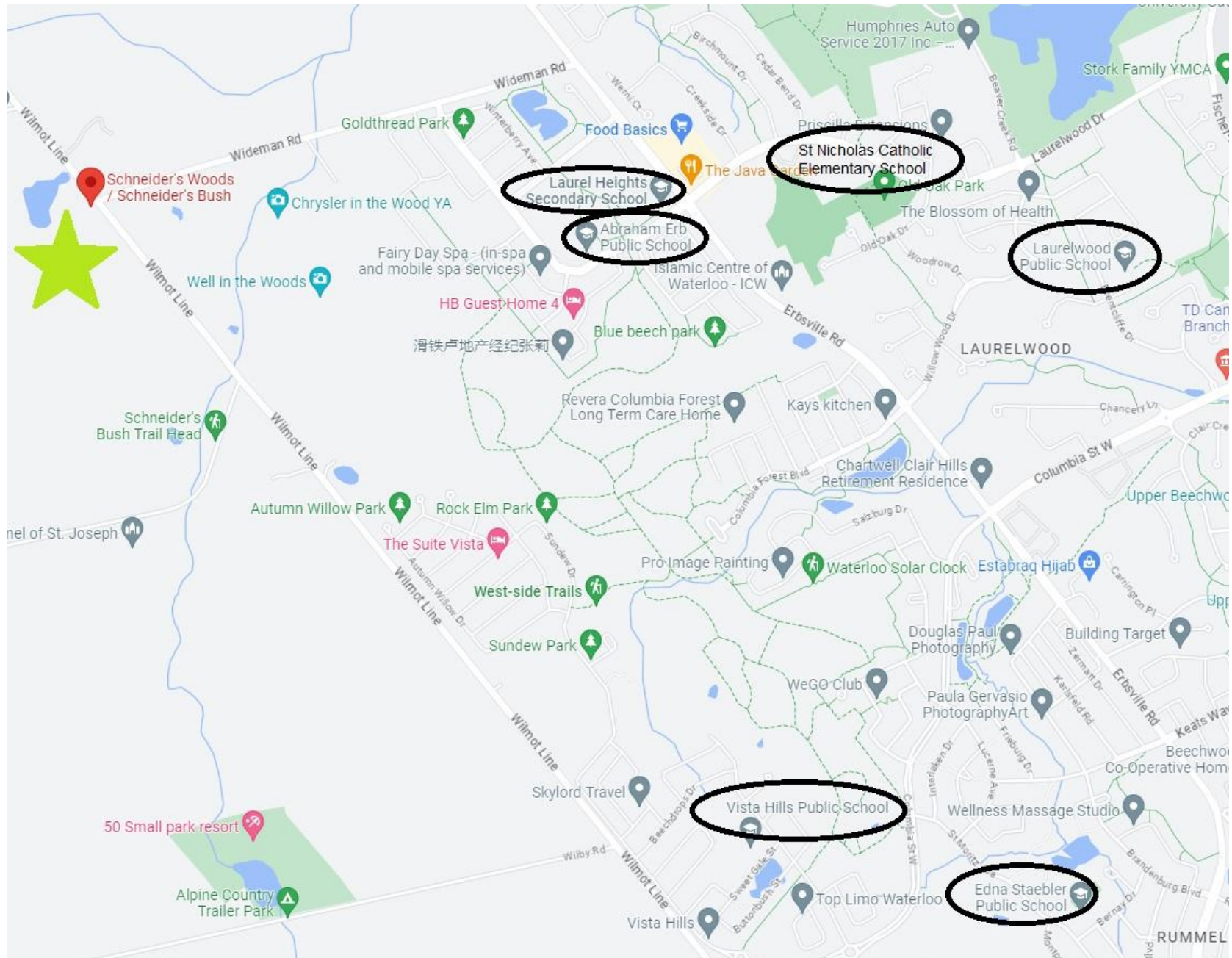
6.11 OPEN SPACE, MAJOR RECREATION, RECREATION AND TOURISM FACILITIES

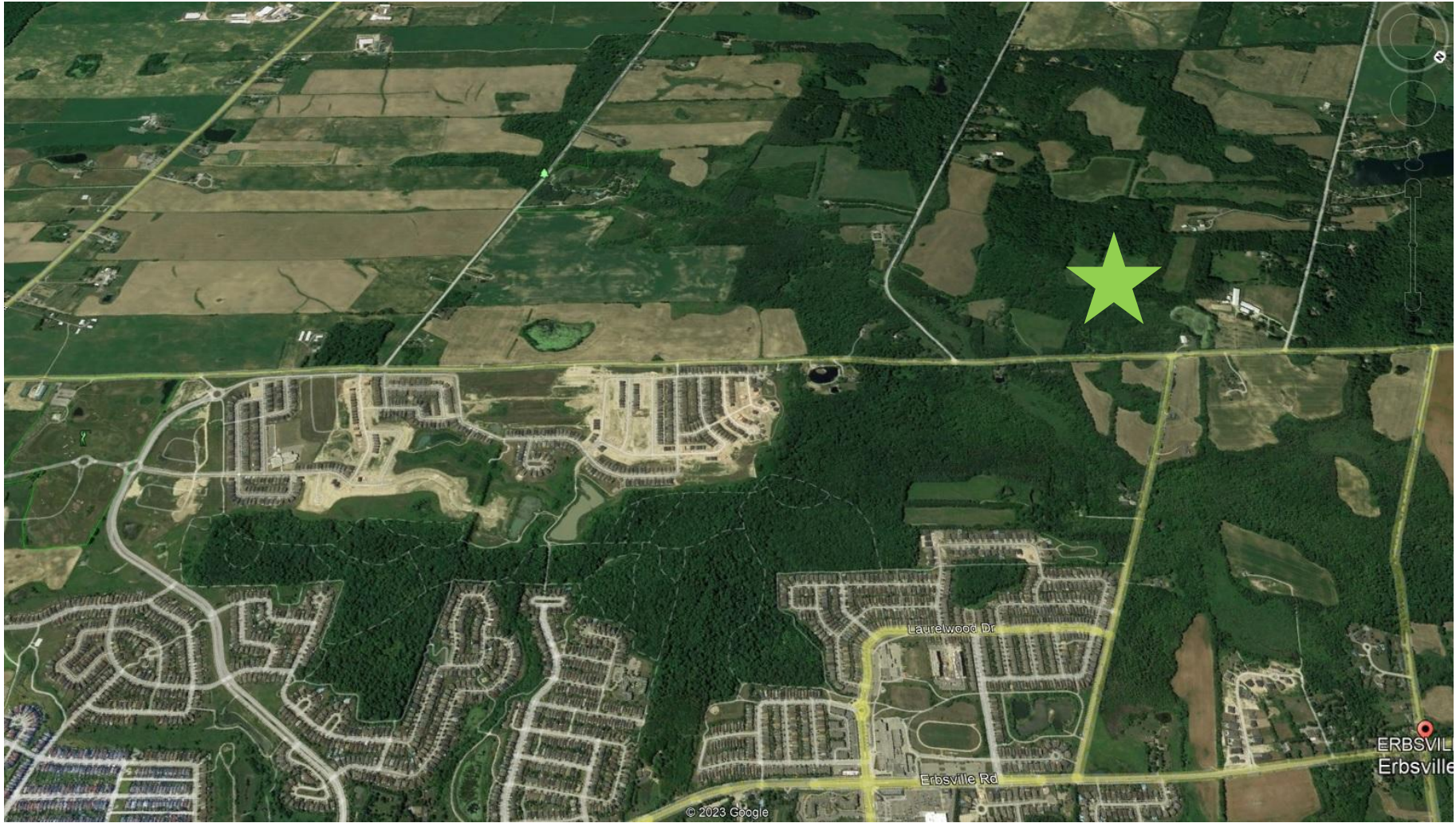
- The Township recognizes the **importance** of parks, **open space**, recreational and tourism facilities **in providing the conservation and protection of significant natural features** and in providing recreational opportunities for its residents.
- The Township will **provide and maintain** sufficient space for both active and **passive recreational pursuits** by combining the provision of parkland, sports fields, community facilities, **and natural areas** to satisfy the recreational needs of all ages and lifestyles, in a manner that reflects the Township's growth and financial priorities.

8.5 ENVIRONMENTAL STEWARDSHIP AND CLIMATE CHANGE

- 8.5.1 Biodiversity:
The Township highly values its rich biodiversity and **will encourage the conservation and enhancement of the native diversity of the natural environment.**

... within walking distance of six schools







Approve the OFFICIAL PLAN
and
ZONE CHANGE Amendments