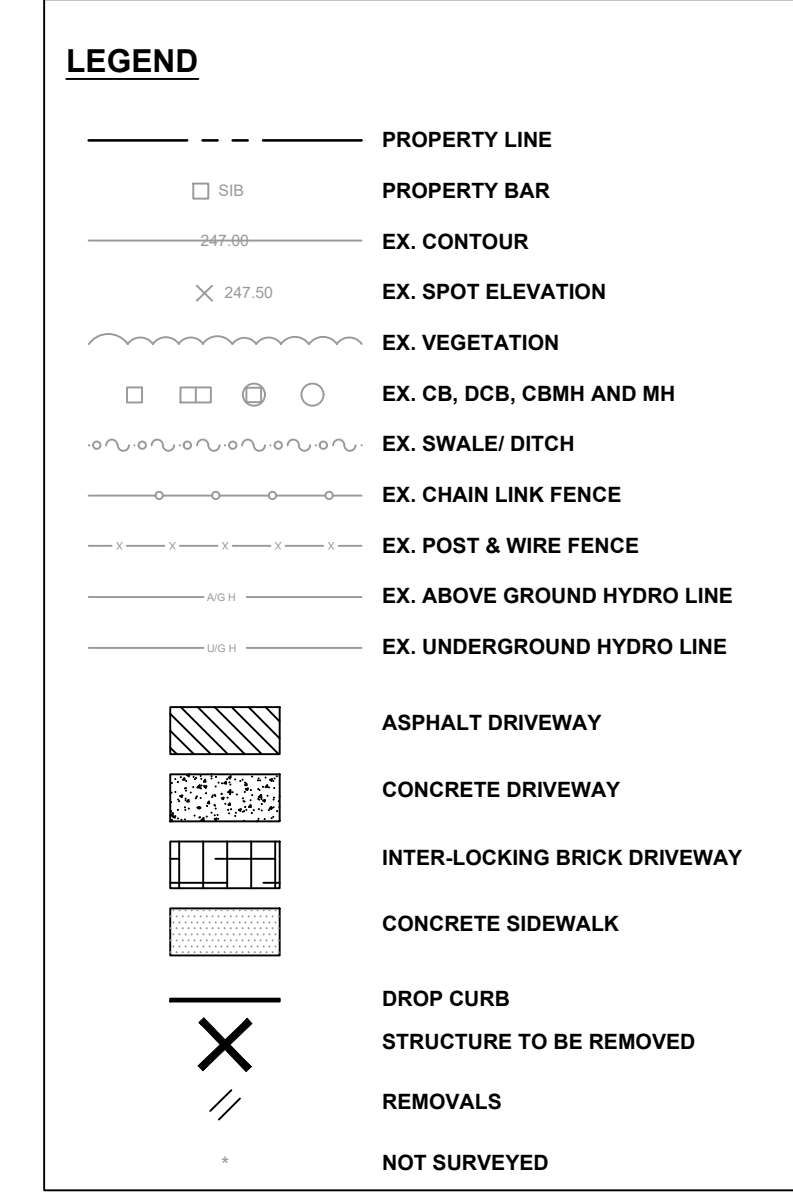


PROPERTY BOUNDARIES
 PROPERTY BOUNDARY INFORMATION SHOWN HEREIN IS DERIVED FROM GIS AND FIELD OBSERVATIONS. ALL DIMENSIONS ARE APPROXIMATE. THIS DOCUMENT IN ITSELF CAN NOT BE USED TO ESTABLISH PROPERTY LIMITS.

SITE BENCHMARKS
 TBM#1 - BM 0011673375 - CONCRETE PIER, ON SOUTH SIDE OF HIGHWAY NO. 7B AND NO. 8B, 0.7 KM EAST FROM HIGHWAY NO. 7 AND NO. 8, 51.8 M SOUTH FROM CENTRE LINE OF HIGHWAY NO. 7B AND NO. 8B, 3.9 M EAST FROM CENTRE LINE OF A FARM LANEWAY. ELEVATION = 361.949m
 TBM#2 - TOP OF PROPERTY BAR (S.I.B.) LOCATED ON SOUTHEAST CORNER OF HURON STREET AND GREENWOOD DRIVE INTERSECTION. ELEVATION = 347.135m
 TBM#3 - TOP OF PROPERTY BAR (S.I.B.) LOCATED ON PROPERTY LINE OF #19 GREENWOOD DRIVE, AT THE NORTH BEGINNING OF CURVE OF CURVATURE OF GREENWOOD DRIVE, AT STATION 1+065.76. ELEVATION = 344.139m



GENERAL NOTES

PAVEMENT STRUCTURE
 H/3 SURFACE ASPHALT - 40mm
 H/8 BINDER ASPHALT - 60mm
 GRANULAR 'A' BASE - 150mm
 GRANULAR 'B' BASE - 400mm

DRIVEWAY RAMPS AS PER WIL-DET-22-31 (STANDARD) AND WIL-DET-22-39 (COMMERCIAL/INDUSTRIAL).

ALL DIMENSIONS ARE IN METRES UNLESS OTHERWISE NOTED.

ALL DIMENSIONS RELATED TO CURB RADIUS OR LANE WIDTHS ARE FROM EDGE OF PAVEMENTS.

NOT ALL EXISTING ABOVE AND BELOW GROUND INFRASTRUCTURE ARE SHOWN ON THIS DRAWING. SEE EXISTING CONDITIONS & REMOVALS DRAWINGS.

ALL ABANDONED PIPE TO BE REMOVED FROM WITHIN EXCAVATION LIMITS, & CAPPED AT EXCAVATION LIMITS.

METHOD OF INSTALLATION OF PROPOSED WATER SERVICES IN THE VICINITY OF TREES, PLANTING BEDS, ETC. TO BE APPROVED BY ENGINEER PRIOR TO START OF CONSTRUCTION.

OTHER UTILITIES:
 CONTRACTOR TO SUPPORT UTILITY POLES AS REQUIRED.
 CONTRACTOR TO SUPPORT ALL UTILITY INFRASTRUCTURE AS REQUIRED.

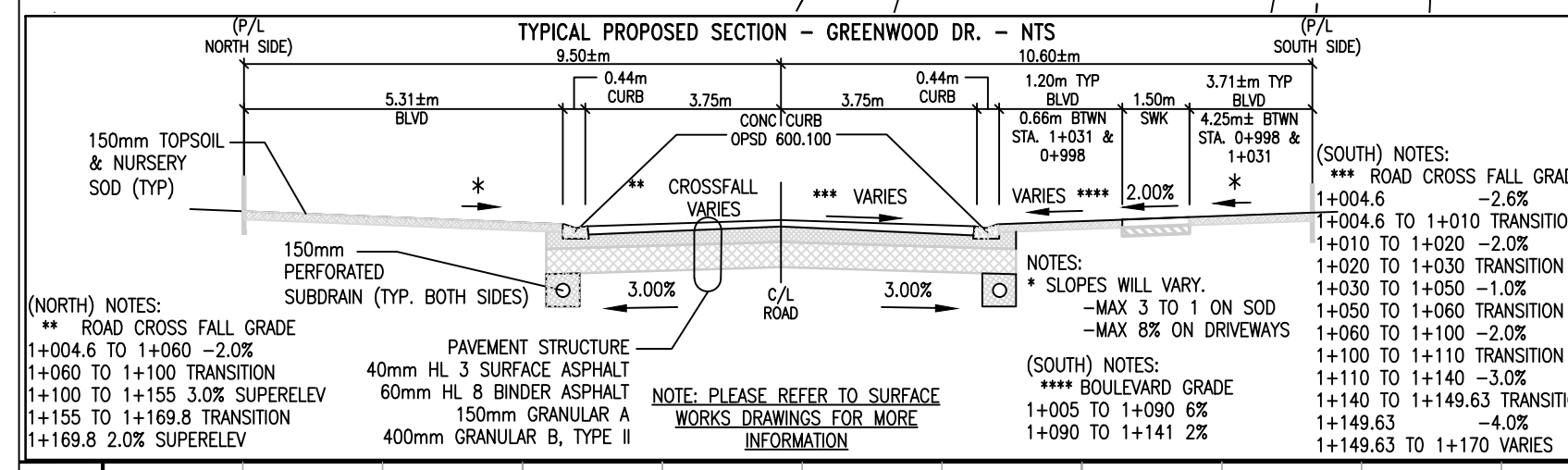
TEMPORARY SUPPORT OF EXISTING UTILITY POLES MUST BE APPROVED BY ENOVA (FORMERLY KITCHENER-WILMOT HYDRO). ALL ASSOCIATED COSTS WILL BE THE RESPONSIBILITY OF CONTRACTOR.

SURVEY NOTES

METRIC NOTE
 ALL DISTANCES SHOWN HEREON ARE IN METERS UNLESS OTHERWISE INDICATED.

HORIZONTAL DATUM
 TOPOGRAPHIC SURVEY COMPLETED BY MTE CONSULTANTS MAY 2020.

UNIVERSAL TRANSVERSE MERCATOR (UTM) PROJECTION, ZONE 17 NORTH, NAD83 CSRS.



GREENWOOD DRIVE

STATION	TOP OF WATER MAIN	SANITARY	STORM	EX. ELEV. PR. ELEV.
1+057.75	342.450			
1+060	341.986	342.245-NW 342.215-E	PROP. 22.0m-300mm Ø PVC STM @ 3.60%	343.04 344.05
1+062.44	341.986	340.773-NW 340.743-E	PROP. 15.5m-200mm Ø PVC SAN @ 2.50%	343.23 343.23
1+077.38	341.200	340.215-NW 340.215-E	PROP. 15.5m-200mm Ø PVC SAN @ 2.50%	343.23 343.23
1+077.41	341.200	340.215-NW 340.215-E	PROP. 15.5m-200mm Ø PVC SAN @ 2.50%	343.23 343.23
1+080	340.930	340.915-NW 340.915-E	PROP. 21.9m-300mm Ø PVC STM @ 2.20%	343.23 343.23
1+082.49	340.803	340.825-SW 340.795-E	PROP. 15.5m-200mm Ø PVC SAN @ 2.50%	343.23 343.23
1+084.73	340.803	340.825-SW 340.795-E	PROP. 15.5m-200mm Ø PVC SAN @ 2.50%	343.23 343.23
1+087.00	340.803	340.825-SW 340.795-E	PROP. 15.5m-200mm Ø PVC SAN @ 2.50%	343.23 343.23
1+100	340.803	340.825-SW 340.795-E	PROP. 15.5m-200mm Ø PVC SAN @ 2.50%	343.23 343.23
1+120	340.487	340.915-NW 340.825-SW	PROP. 52.3m-375mm Ø PVC STM @ 1.10%	343.23 342.47
1+122.82	340.487	340.915-NW 340.825-SW	PROP. 52.3m-375mm Ø PVC STM @ 1.10%	343.23 342.47
1+124.12	340.487	340.915-NW 340.825-SW	PROP. 52.3m-375mm Ø PVC STM @ 1.10%	343.23 342.47
1+126	340.487	340.915-NW 340.825-SW	PROP. 52.3m-375mm Ø PVC STM @ 1.10%	343.23 342.47
1+127	340.487	340.915-NW 340.825-SW	PROP. 52.3m-375mm Ø PVC STM @ 1.10%	343.23 342.47
1+140	340.287	340.915-NW 340.825-SW	PROP. 52.3m-375mm Ø PVC STM @ 1.10%	343.23 342.47
1+148.31	340.246	340.915-NW 340.825-SW	PROP. 52.3m-375mm Ø PVC STM @ 1.10%	343.23 342.47
1+150.60	340.246	340.915-NW 340.825-SW	PROP. 52.3m-375mm Ø PVC STM @ 1.10%	343.23 342.47
1+160	340.284	340.915-NW 340.825-SW	PROP. 18.3m-300mm Ø PVC SAN @ 2.00%	343.23 342.29
1+166.64	340.316	340.915-NW 340.825-SW	PROP. 18.3m-300mm Ø PVC SAN @ 2.00%	343.23 342.29
1+180	340.316	340.915-NW 340.825-SW	PROP. 18.3m-300mm Ø PVC SAN @ 2.00%	343.23 342.29



TOWNSHIP OF WILMOT
 60 SNYDER'S ROAD WEST
 BADEN, ON N3A 1A1
 519.634.5037 tel 519.634.5522 fax
 www.wilmot.ca

PROJECT
GREENWOOD DRIVE RECONSTRUCTION
 NEW HAMBURG, ON
 GREENWOOD DRIVE AND HURON STREET

REGISTRATION

ISSUE/REVISION

I/R	DATE	DESCRIPTION
4	2023-02-21	ISSUED FOR TENDER
3	2023-01-16	90% SUBMISSION
2	2022-12-09	60% SUBMISSION
1	2020-07-13	30% SUBMISSION

KEY PLAN

PROJECT NUMBER
 2023-02

SHEET TITLE
 PROPOSED CONDITIONS
 STA. 1+055 TO STA. 1+180
 OPTION 1

SHEET NUMBER
 C202