

APPENDIX I



Why I Object to the Hallman Pit

Christina Harnack

Spring 2022

APPENDIX I

Wilmot Region-Our community for generations to come



APPENDIX I

I object to the Hallman pit for several reasons.

I am concerned about:

- » Our Water Safety
- » Toxic Pollution affecting Noise and Air quality
 - » The Well-Being of Others
 - » Negative Effects on the Environment
 - » Climate Change
 - » Our Physical and Mental Health

APPENDIX I

POTENTIAL IMPACTS OF THE PROPOSED HALLMAN PIT



CUMULATIVE IMPACTS The combined impact of all 'past, present and future' gravel pits

HEALTH IMPACTS



Increased noise levels due to truck activity, alarms and extraction



Health effects from exposure to harmful fine particulate matter (dust)



Potential for contamination of our drinking water in sensitive recharge areas

ECONOMIC IMPACTS



Safety of operations of proposed traffic impact not satisfied by experts



Questions remain about the feasibility of rehabilitation back to prime farmland between experts

ECOLOGICAL IMPACTS



What impact with the life of the Hallman pit have on the life of the wetland and Woodlots?



Auxiliary activities such as wash ponds can increase risk for groundwater impacts



Operational practices, such as fuel storage and asphalt recycling, can increase risk of pollution

statements made are based on expert reviews commissioned by the Region of Waterloo, Wilmot Township and Citizens for Safe Ground Water Inc., as well as the Grand River Conservation Authority, to date



APPENDIX I

The Danger of Fine Particulate Matter

- Fine Particulate Matter is related to increases in:
 - cardiopulmonary disease
 - asthma, bronchitis, emphysema,
 - and premature death in those with pre-existing conditions.
- Crystalline silica dust is common from processing sand and gravel and is a known carcinogen.

APPENDIX I

The Danger of Fine Particulate Matter

- Diesel emissions contain Fine Particulate Matter that can enter our bloodstream
 - Fine Particulate Matter is smaller than a red blood cell!
- Diesel emissions in our community will increase with the Hallman Pit with a proposed 1-2 trucks per minute.
- Diesel engine exhaust is “carcinogenic to humans” and linked to lung cancer and bladder cancer (Evidence from the International Agency for Research on Cancer (IARC))

APPENDIX I

The Danger of Fine Particulate Matter

- As a result of increased exposure to Fine Particulate Matter, Lancet Planetary Health, using data from U.S. and Ontario and published in 2020, identifies :
 - Impaired cognitive function
 - Accelerated cognitive decline
 - Parkinson's disease, Alzheimer's disease
 - Dementia
- The Global Burden of Disease, Injuries and Risk Factors Study in 2016 outlines the increase of neurodegenerative diseases and premature death connected to Fine Particulate Matter.
- Fine Particulate Matter is related to increases in cardiopulmonary disease, asthma, bronchitis, emphysema, and premature death in those with pre-existing conditions.
- Seniors and young children are the most at risk with increased exposure to Fine Particulate Matter.

APPENDIX I



Google Earth

©2020 Google

40 m

Accessory Use - Wilmot Official Plan

APPENDIX I



ACCESSORY PROPERTY USE

Do auxiliary aggregate activities pose an unnecessary risk to sensitive recharge areas?

The Township will regulate uses associated with aggregate extraction through the Zoning By-law as follows:

- a) permit *accessory uses* associated with aggregate extraction operations and processing activities such as crushing, screening, washing, stockpiling, blending with recycled asphalt or concrete materials, storage, weigh scales, parking and office facilities;

Source: Township of Wilmot Official Plan – April 2019 Consolidation - 7.1.1.7

Wilmot Council has the ability to mitigate risk:



No 'Wash Ponds' on-site



No Used asphalt/concrete stockpiling, reprocessing.



No Fuel storage on-site

Note: Applicant has proposed these activities take place in a “**Sensitive Recharge Area**”

APPENDIX I



TOWNSHIP
OF WILMOT

MEDIA RELEASE

Wilmot Township Council Approves Climate Emergency Declaration

Baden, ON - At the September 23rd Council meeting, the Township of Wilmot took another solid step forward in continuing its efforts to promote sustainability by joining government agencies in the declaration of a climate emergency.

Over the past few months, Kai Reimer-Watts and Andreas Fuentes from the Climate Emergency Declaration Group Waterloo Region have been working with area municipalities on formulating resolutions in support of the Climate Emergency Declaration.

Data provided by Mr. Reimer-Watts and Mr. Fuentes indicates that municipalities are significant contributors to climate change, consuming more than 2/3 of the world's energy and accounting for more than 70% of its carbon emissions.

The Township of Wilmot has an absolute Green House Gas (GHG) emissions target reduction of 25% from 2012 levels by 2027, and has already reduced its GHG emissions by approximately 19.6% or 330 tons since 2012.

APPENDIX I

“The Township of Wilmot has an absolute Greenhouse Gas (GHG) emissions target reduction of 25% from 2012 levels by 2027”.

APPENDIX I

The decision on this rezoning in a Source Water protected area will be precedent setting.

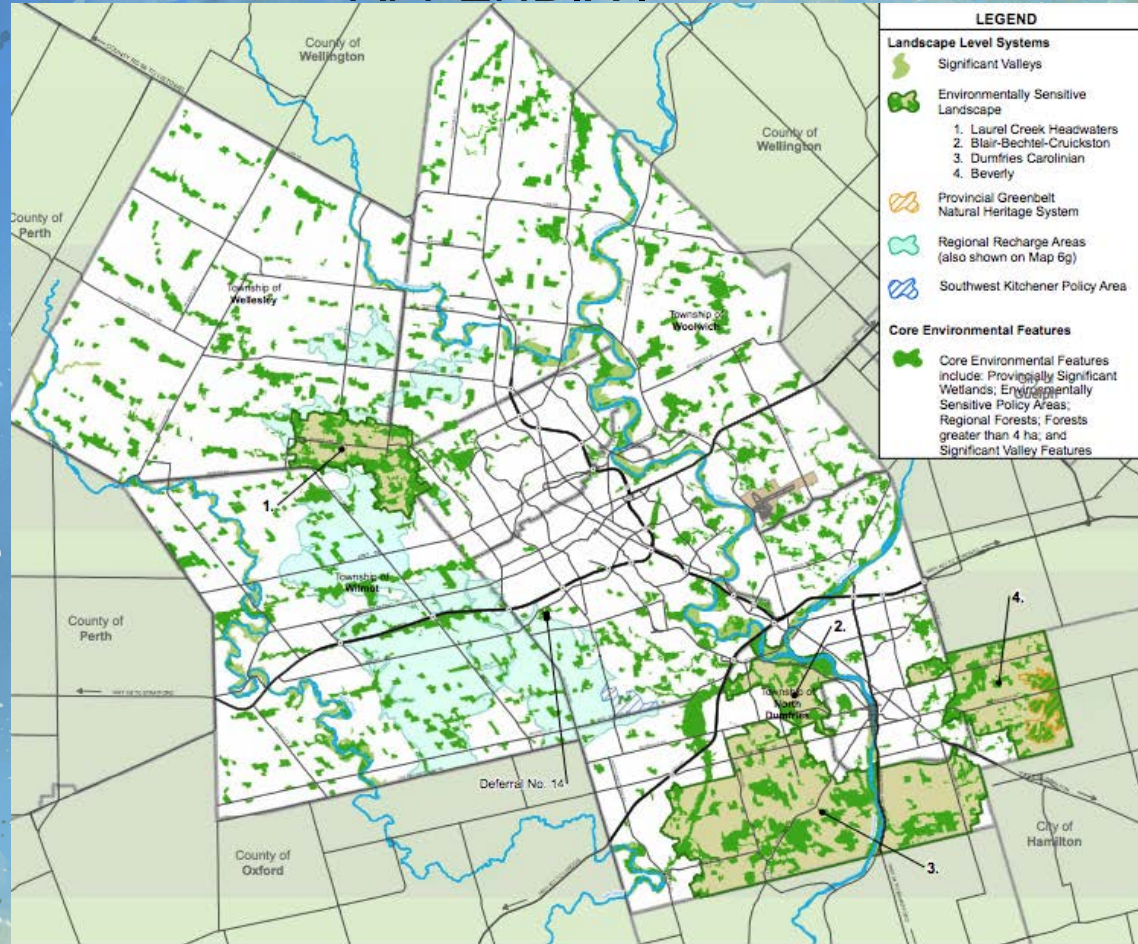
To date, there has not been a gravel pit approved for rezoning in a Source Water Protected Area.

This precedent decision comes with great responsibility and could open the potential of other protected areas to also be negatively impacted and exploited.

APPENDIX I

Regional Official
Plan:

Wilmot Region is
identified as
Regional Recharge
Area



LEGEND

Landscape Level Systems

- Significant Valleys
- Environmentally Sensitive Landscape
 1. Laurel Creek Headwaters
 2. Blair-Bechtel-Cruickston
 3. Dumfries Carolinian
 4. Beverly
- Provincial Greenbelt Natural Heritage System
- Regional Recharge Areas (also shown on Map 6g)
- Southwest Kitchener Policy Area

Core Environmental Features

Core Environmental Features include: Provincially Significant Wetlands; Environmentally Sensitive Policy Areas; Regional Forests; Forests greater than 4 ha; and Significant Valley Features



Regional Official Plan
SHAPING OUR FUTURE

MAP 4

GREENLANDS
NETWORK

LEGEND

- Provincial Highway
- Regional Road
- River
- Region of Waterloo International Airport
- Municipal Boundary
- Railway

0 1 2 4 Km

Sources: Region of Waterloo, Ministry of Natural Resources

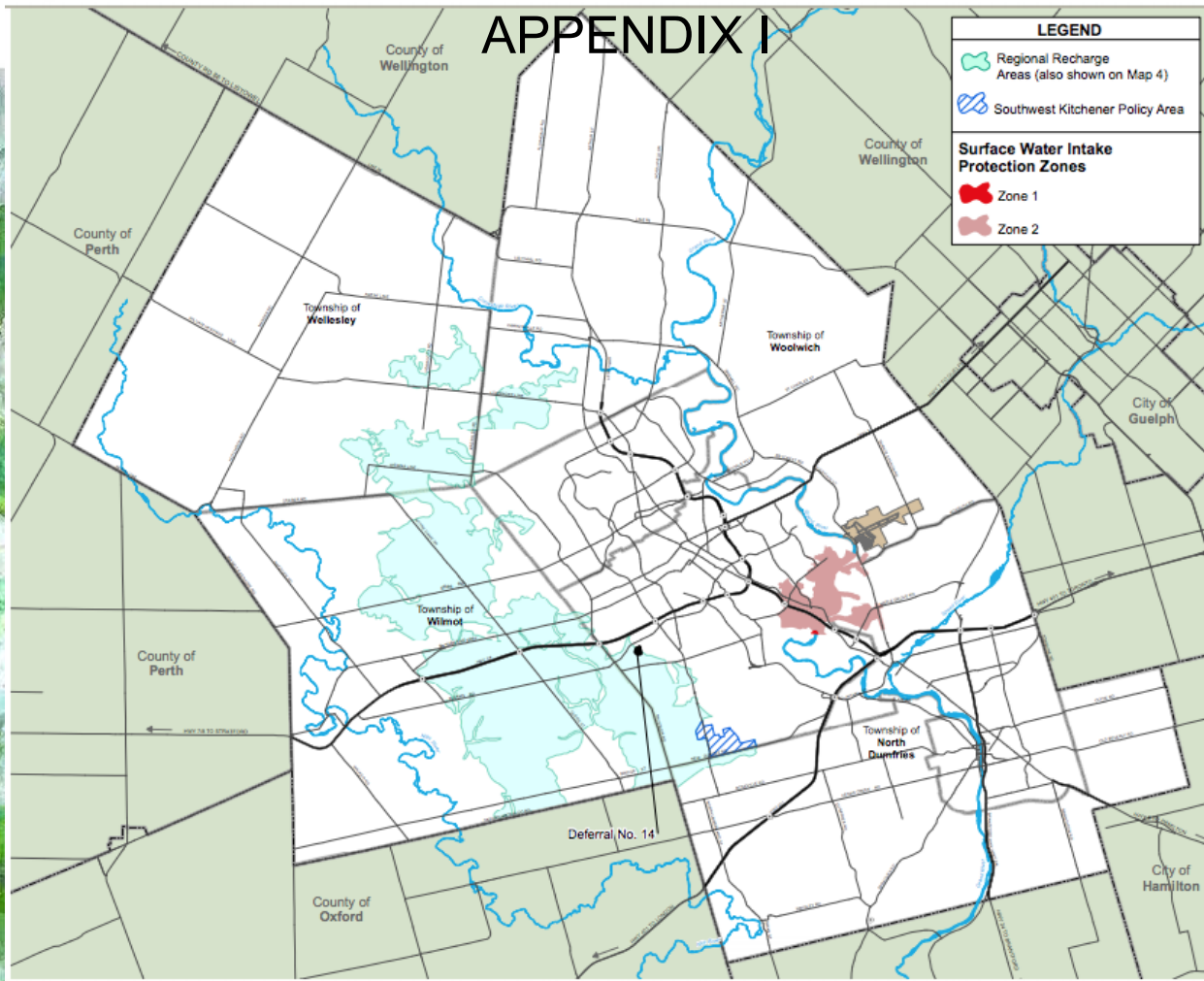
2015

Note: Permanent and intermittent watercourses are identified in the Technical Appendix for Landscape Level Systems and Core Environmental Features

Note: This map forms part of the Official Plan of the Region of Waterloo and must be read in conjunction with the policies of the Plan.



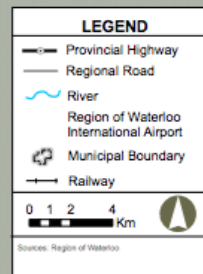
APPENDIX I



Region of Waterloo

Regional Official Plan
SHAPING OUR FUTURE

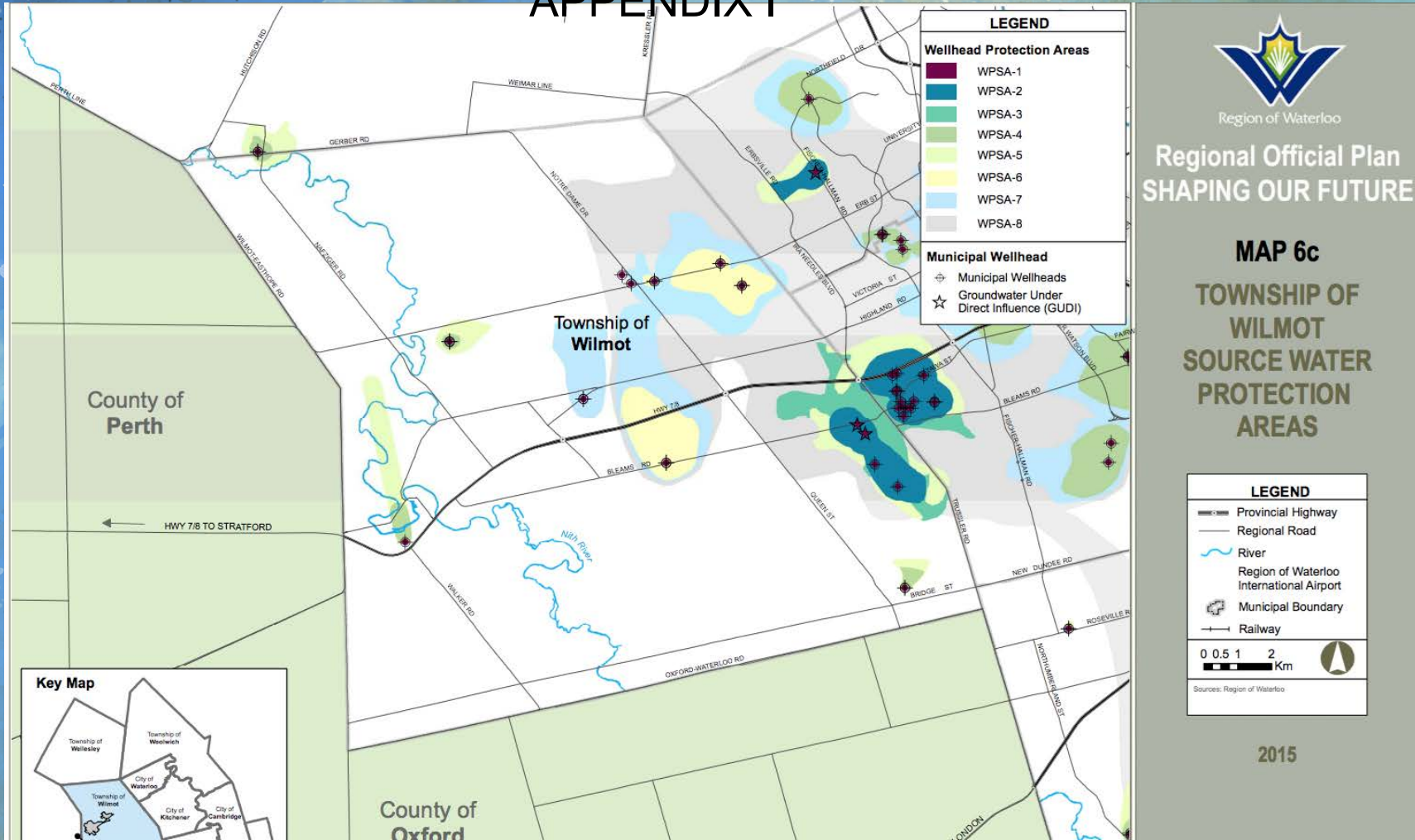
MAP 6g OTHER SOURCE WATER PROTECTION AREAS



2015

Note: This map forms part of the Official Plan of the Regional Municipality of Waterloo and must be read in conjunction with the policies of this Plan.

APPENDIX I



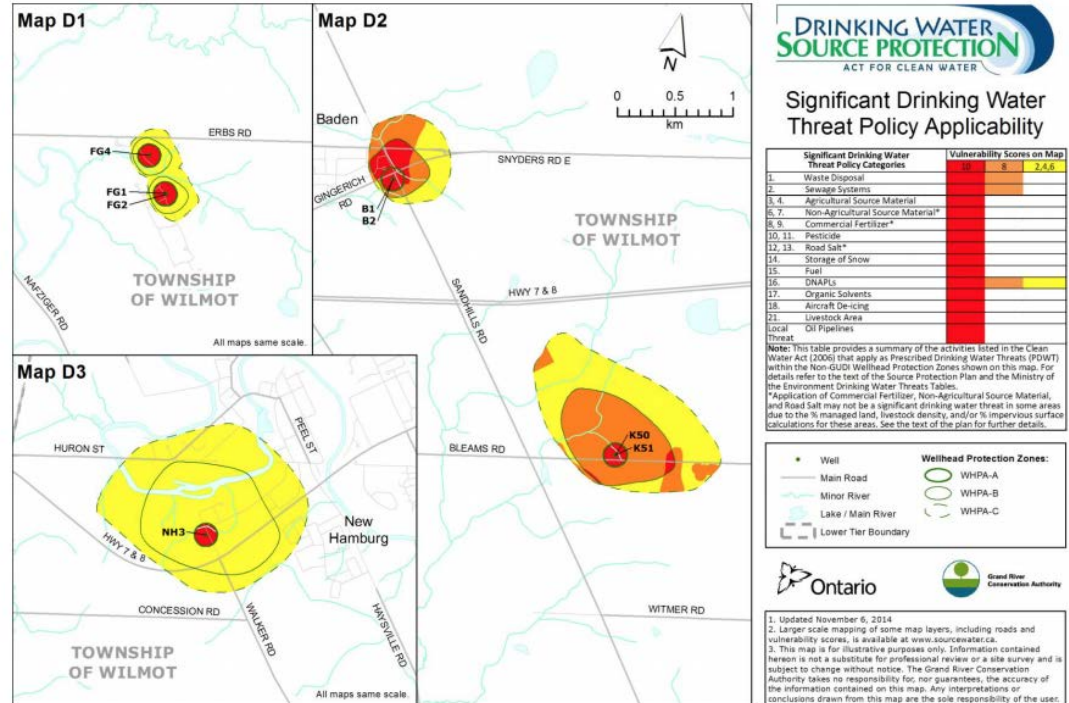
APPENDIX I

Drinking Water Source Protection Plan

Grand River Source Protection Plan

Volume II – Approved

10.10 Schedule E: Regional Municipality of Waterloo: Township of Wilmot Well Fields Maps D1, D2 and D3



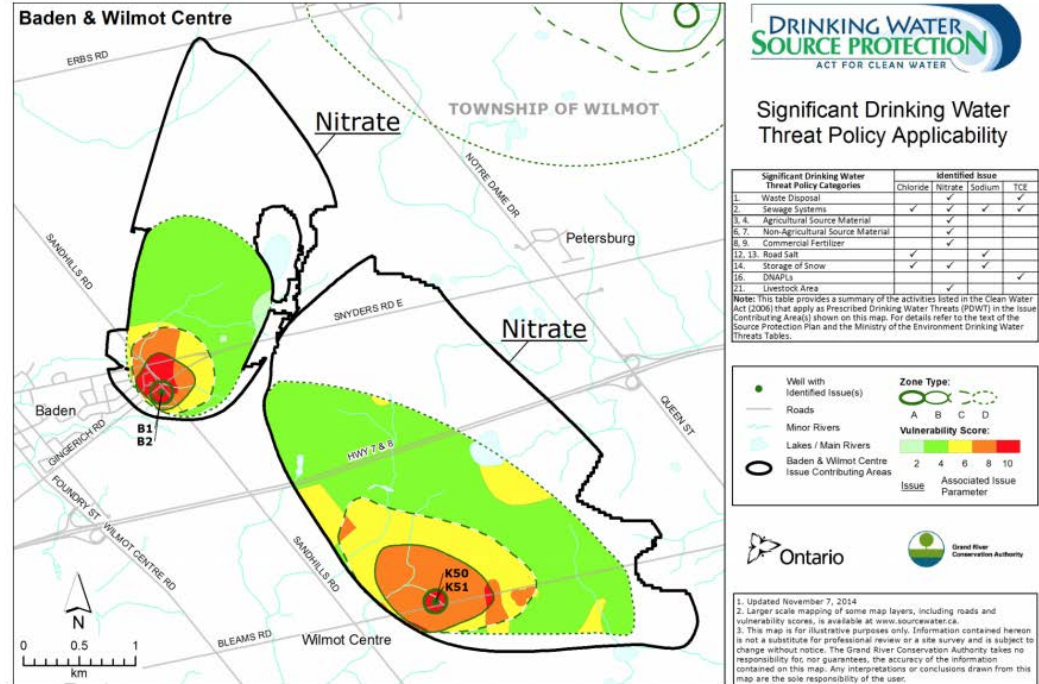
APPENDIX I

Significant Drinking Water Threat Policy Applicability

Grand River Source Protection Plan

Volume II – Approved

10.21 Schedule P: Regional Municipality of Waterloo: Baden and Wilmot Centre Issue Contributing Areas



November 26, 2015

Regional Municipality of Waterloo - Section 10-66

APPENDIX I

Chapter 8

Source Water Protection

8. Source Water Protection

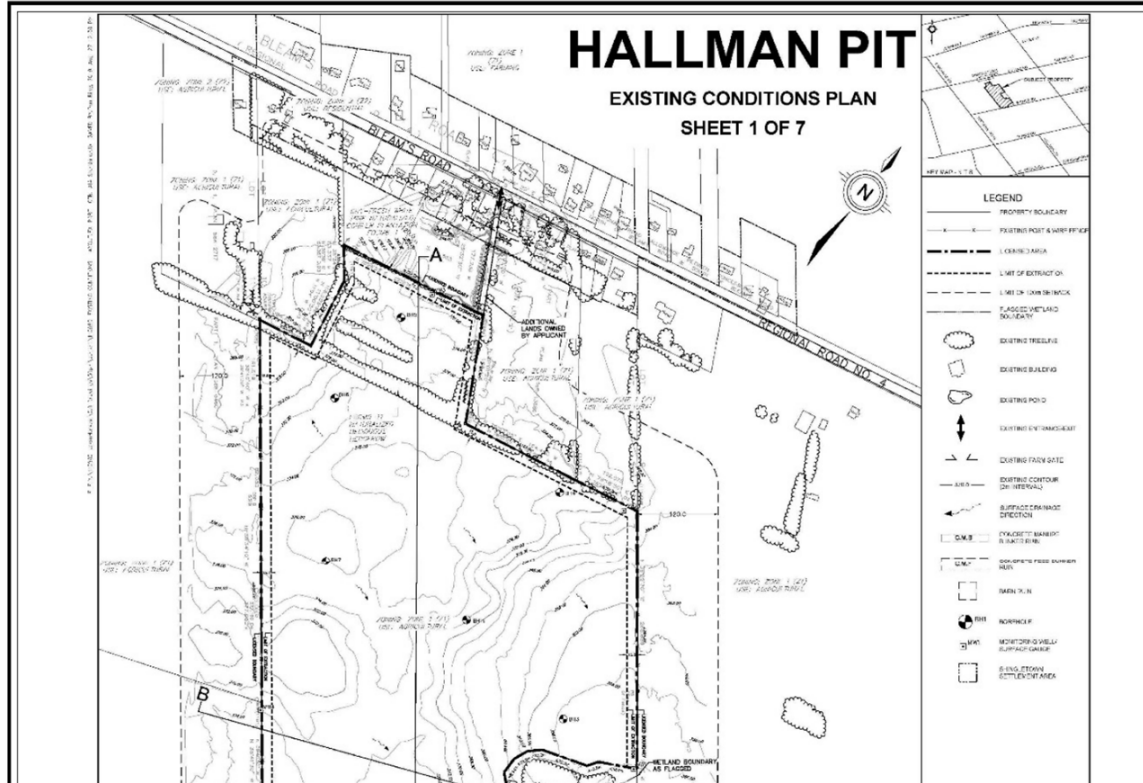
Waterloo Region is unique in Ontario in that it is the largest urban municipality to rely almost exclusively on groundwater supplies for its drinking-water. Approximately three quarters of all the region's drinking-water comes from the over one hundred municipal wells, many of which tap into rich aquifers sustained by the Waterloo Moraine. The remaining quarter of the region's drinking-water is drawn from the Grand River. Protecting these valuable water resources from contamination and from land uses that could hinder groundwater recharge is essential to maintaining human health, economic prosperity and a high quality of life in the region.

The *Province* has recently emphasized the importance of protecting the *municipal drinking-water supply system* by way of land use planning decisions, through changes to the Provincial Policy Statement. The importance of protecting the *municipal drinking-water supply system* is also underscored by the enactment of the Safe Drinking Water Act and the Clean Water Act. The Region's role in implementing Provincial policy, places an obligation on the Region to make land use planning decisions consistent with the Provincial Policy Statement's direction to protect the quality and quantity of drinking-water resources in the region, and to limit *development* and *site alteration* that could adversely affect drinking-water supplies drawn from both the Grand River and groundwater resources. Waterloo Region's continued long-term reliance on groundwater resources necessitates a high priority be placed on protecting this valuable resource through land use management.

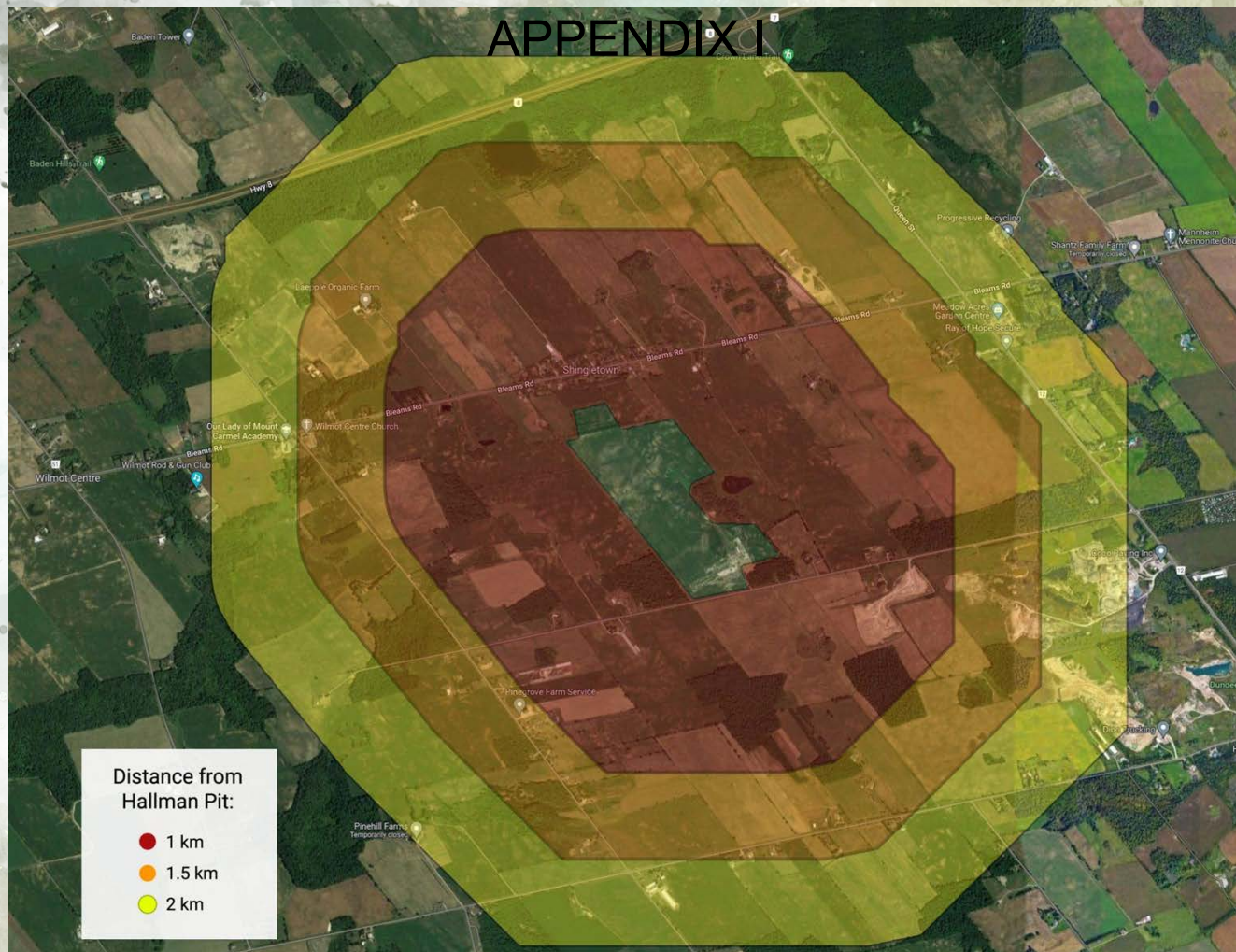
Def.
No. 1

APPENDIX I

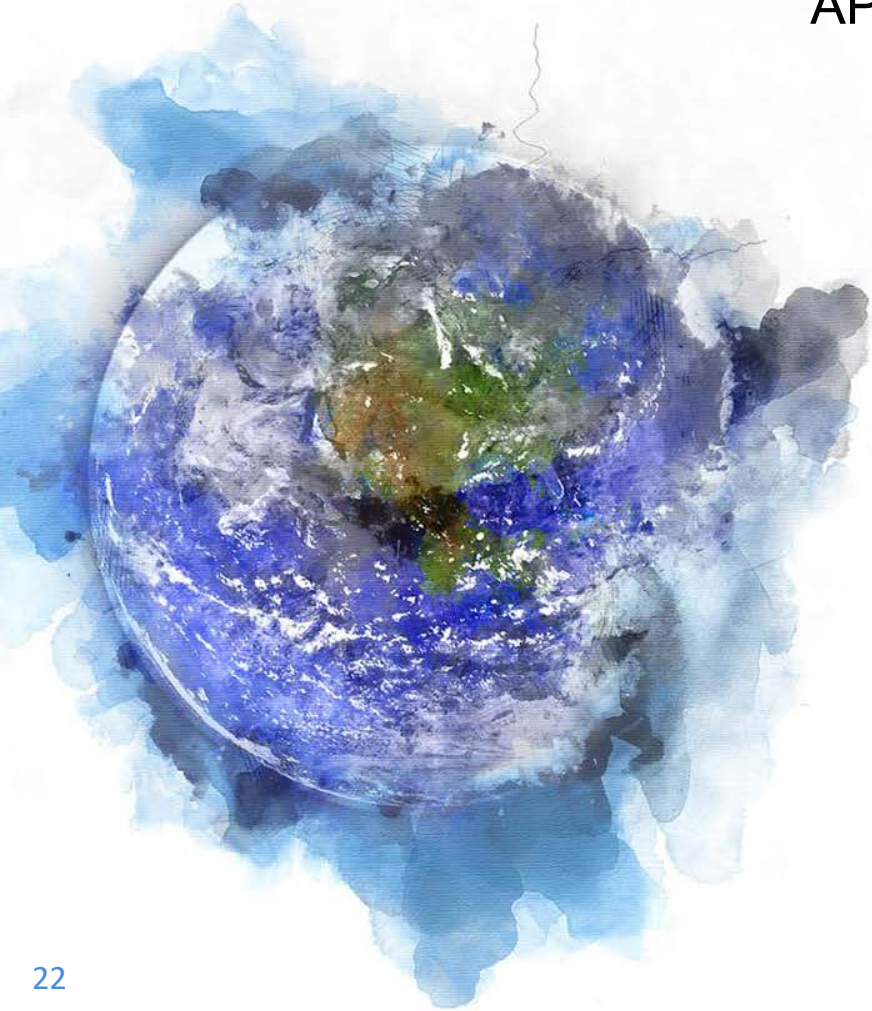
How will properties be affected?



APPENDIX I



APPENDIX I



APPENDIX I

Mr. Esbaugh cannot prove beyond a reasonable doubt that he will have no negative impact on our water, environment, roads, mental health, community or on Greenhouse Gas Emissions. The approval of this rezoning has great stakes and is not worth the risks.

APPENDIX I

Please be courageous when you make a decision for this re-zoning proposal.

Please remember the many **people** who have voiced their concerns and please make this decision with the values of our community at heart and not for the goals and projects of an individual developer.



APPENDIX I