

# APPENDIX C



## Initial Peer Review Comments and Results – Hallman Pit (On behalf of Citizens for Safe Ground Water)

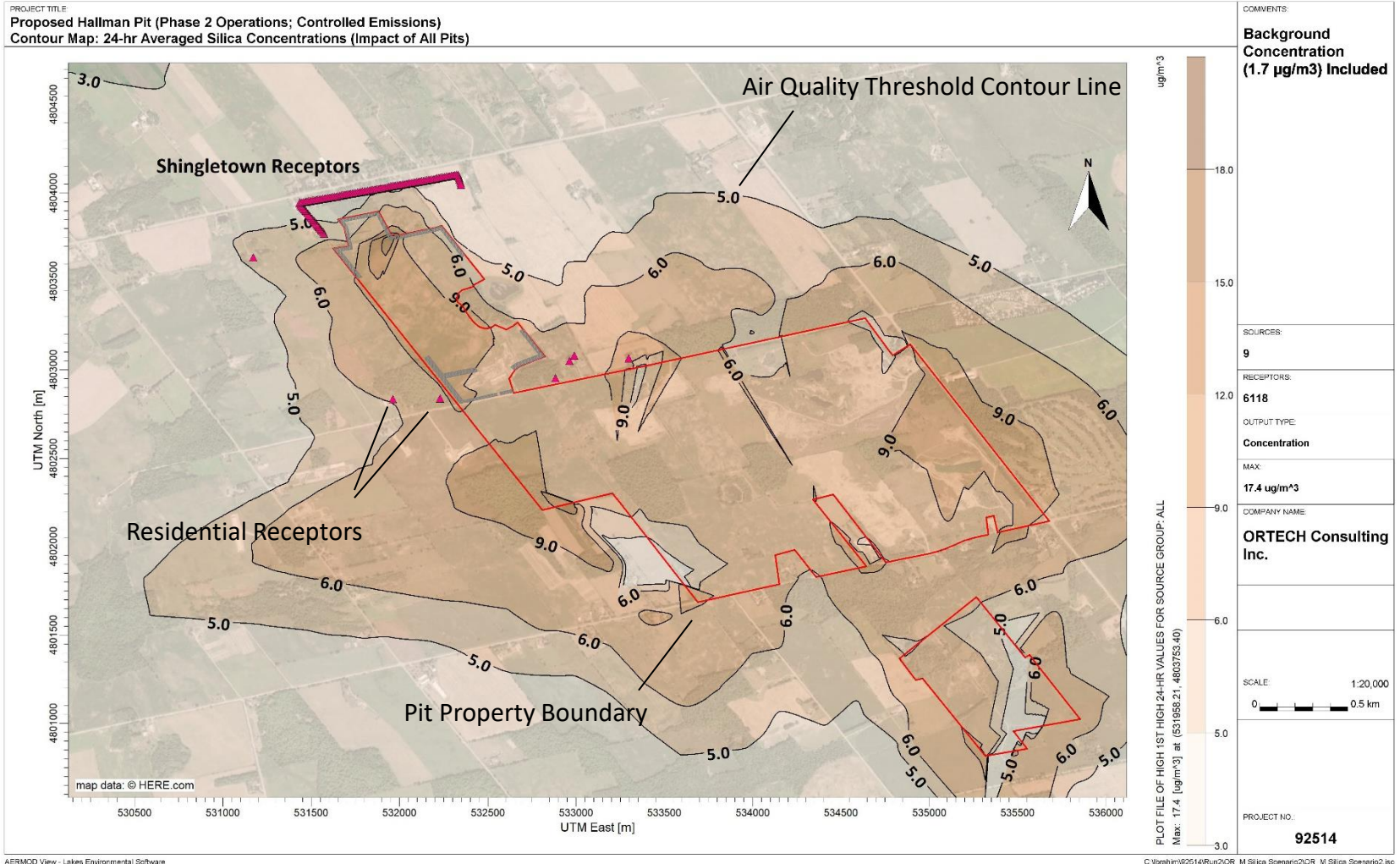
Contaminant	Scenario [1]	Averaging Period	Background Conc. [2] ( $\mu\text{g}/\text{m}^3$ )	Air Quality Threshold ( $\mu\text{g}/\text{m}^3$ )	Maximum Cumulative Concentration at Sensitive Receptor			
					Impact - All Pits		Impact - Hallman Pit Only	
					Max. Conc. ( $\mu\text{g}/\text{m}^3$ )	% of Air Quality Threshold	Max. Conc. ( $\mu\text{g}/\text{m}^3$ )	% of Air Quality Threshold
Silica	Phase 2 (Controlled)	24-hour	1.7	5	10.85	217%	7.46	149%
	Phase 2 (Uncontrolled)				21.42	428%	21.42	428%
	Phase 3 (Controlled)				10.94	219%	7.12	142%
	Phase 3 (Uncontrolled)				20.66	413%	20.66	413%
PM <sub>2.5</sub>	Phase 2 (Controlled)	Annual	7.6	8.8	8.65	98%	8.19	93%
	Phase 2 (Uncontrolled)				9.69	110%	9.37	106%
	Phase 3 (Controlled)				8.66	98%	8.11	92%
	Phase 3 (Uncontrolled)				9.49	108%	9.17	104%
PM <sub>2.5</sub>	Phase 2 (Controlled)	24-hour	15	22	18.46	84%	17.36	79%
	Phase 2 (Uncontrolled)				22.22	101%	22.10	100%
	Phase 3 (Controlled)				18.47	84%	17.08	78%
	Phase 3 (Uncontrolled)				21.62	98%	21.46	98%
PM <sub>10</sub>	Phase 2 (Controlled)	24-hour	28	50	81.91	164%	61.88	124%
	Phase 2 (Uncontrolled)				144.17	288%	144.17	288%
	Phase 3 (Controlled)				82.45	165%	59.87	120%
	Phase 3 (Uncontrolled)				139.73	279%	139.73	279%
TSP	Phase 2 (Controlled)	24-hour	51	120	210.22	175%	147.41	123%
	Phase 2 (Uncontrolled)				410.04	342%	410.04	342%
	Phase 3 (Controlled)				211.98	177%	145.86	122%
	Phase 3 (Uncontrolled)				406.30	339%	406.30	339%

- Controlled - Emissions from all pits are controlled  
Uncontrolled - Only Hallman Pit emissions are uncontrolled and emissions from all other pits are controlled
- Background concentration values were adopted from proponent's report
- Table values represent ORTECH's assessment of publicly available information, which in some cases lacks sufficient detail and professional judgement was required to fill in these data gaps

# APPENDIX C



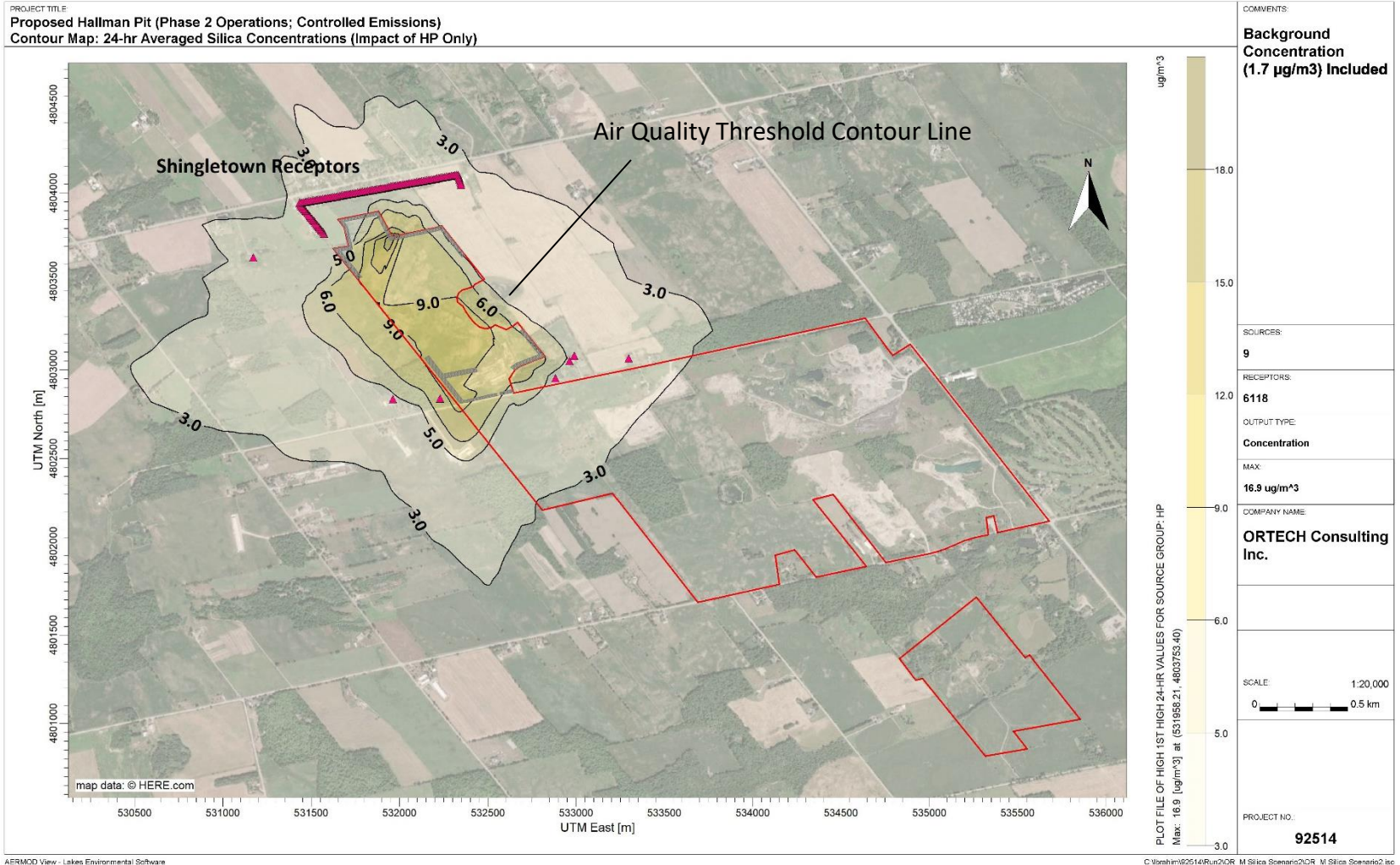
## Initial Peer Review Comments and Results – Hallman Pit (On behalf of Citizens for Safe Ground Water)



Note: Contributions from other pits assumes emissions are proportional to Hallman. Not all pits are active and contour lines therefore do not reflect current conditions.

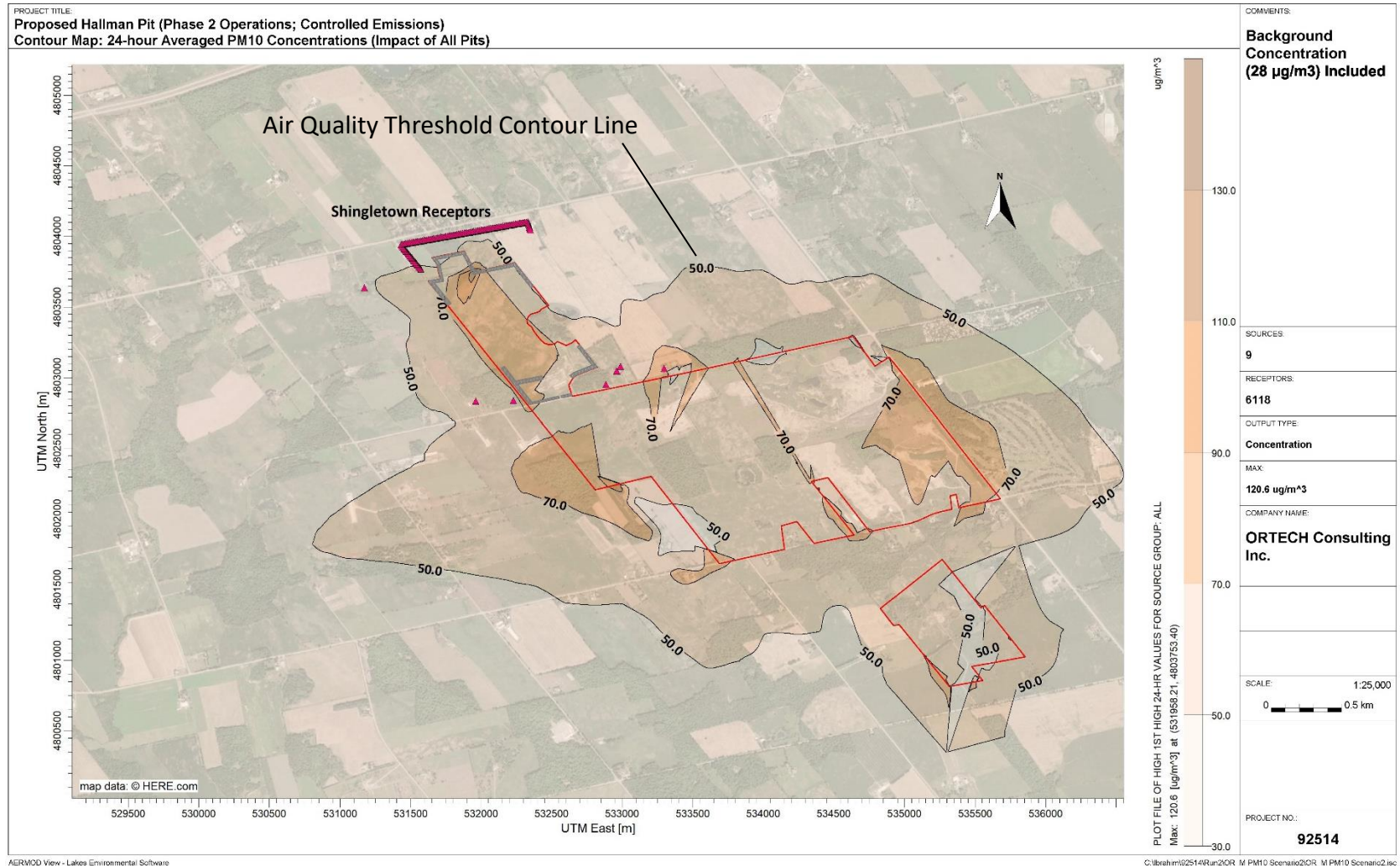
# APPENDIX C

## Initial Peer Review Comments and Results – Hallman Pit (On behalf of Citizens for Safe Ground Water)



# APPENDIX C

## Initial Peer Review Comments and Results – Hallman Pit (On behalf of Citizens for Safe Ground Water)



AERMOD View - Lakes Environmental Software

C:\brahm\92514\Run\20R\_M PM10 Scenario2\OR\_M PM10 Scenario2\isc

Note: Contributions from other pits assumes emissions are proportional to Hallman. Not all pits are active and contour lines therefore do not reflect current conditions.

# APPENDIX C

## Initial Peer Review Comments and Results – Hallman Pit (On behalf of Citizens for Safe Ground Water)

