


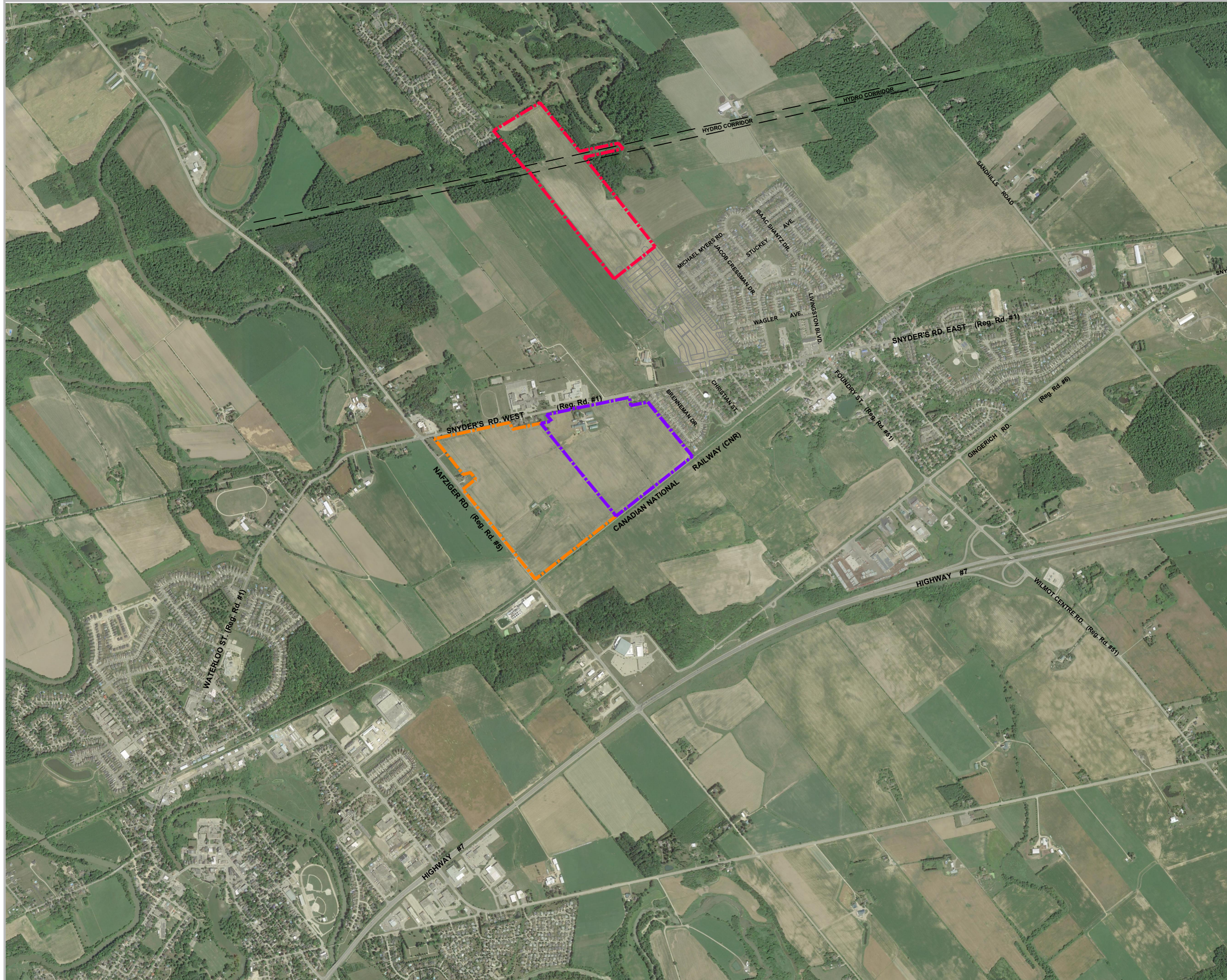


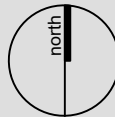
**Snyder's Road (Baden) GP Inc./  
Stremma Developments Inc.**  
1012 Snyder's Rd W, 1149 Snyder's Rd W, 1455 Nafziger Rd  
Township of Wilmot  
Regional Municipality of Waterloo

LEGEND

-  Snyder's Road (Baden) GP Inc.
-  Stremma Developments (Baden Southeast) Inc.
-  Stremma Developments (Baden Southwest) Inc.



Sources:  
- 2018 Imagery: Google Earth  
- Township Urban Area Boundary and Countryside Line from Township of Wilmot Official Plan (consolidated April 2019). Boundaries are approximate.

DATE: August, 2021	
FILE: 1985B	
SCALE ±1:20,000	
DRAWN: DGS/JB	

K:\1985B-BADEN SETTLEMENT AREA EXPANSION\RP\PROPERTY OWNERSHIP  
MAP\_25AUG2021.DWG



**PLANNING  
URBAN DESIGN  
& LANDSCAPE  
ARCHITECTURE**

200-540 BINGEMAN'S CENTRE DR. KITCHENER, ON, N2B 3X9  
P: 519.576.3650 F: 519.576.0121 | WWW.MHBCPLAN.COM