



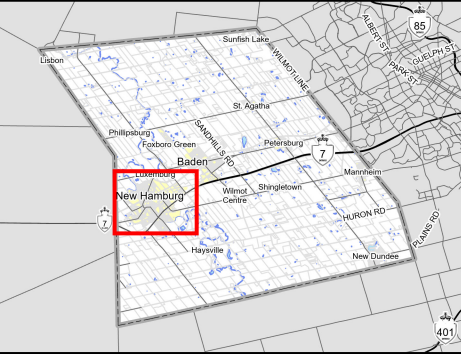
DEPARTMENT OF INFRASTRUCTURE SERVICES

Hot Mix 2026 Overview: New Hamburg

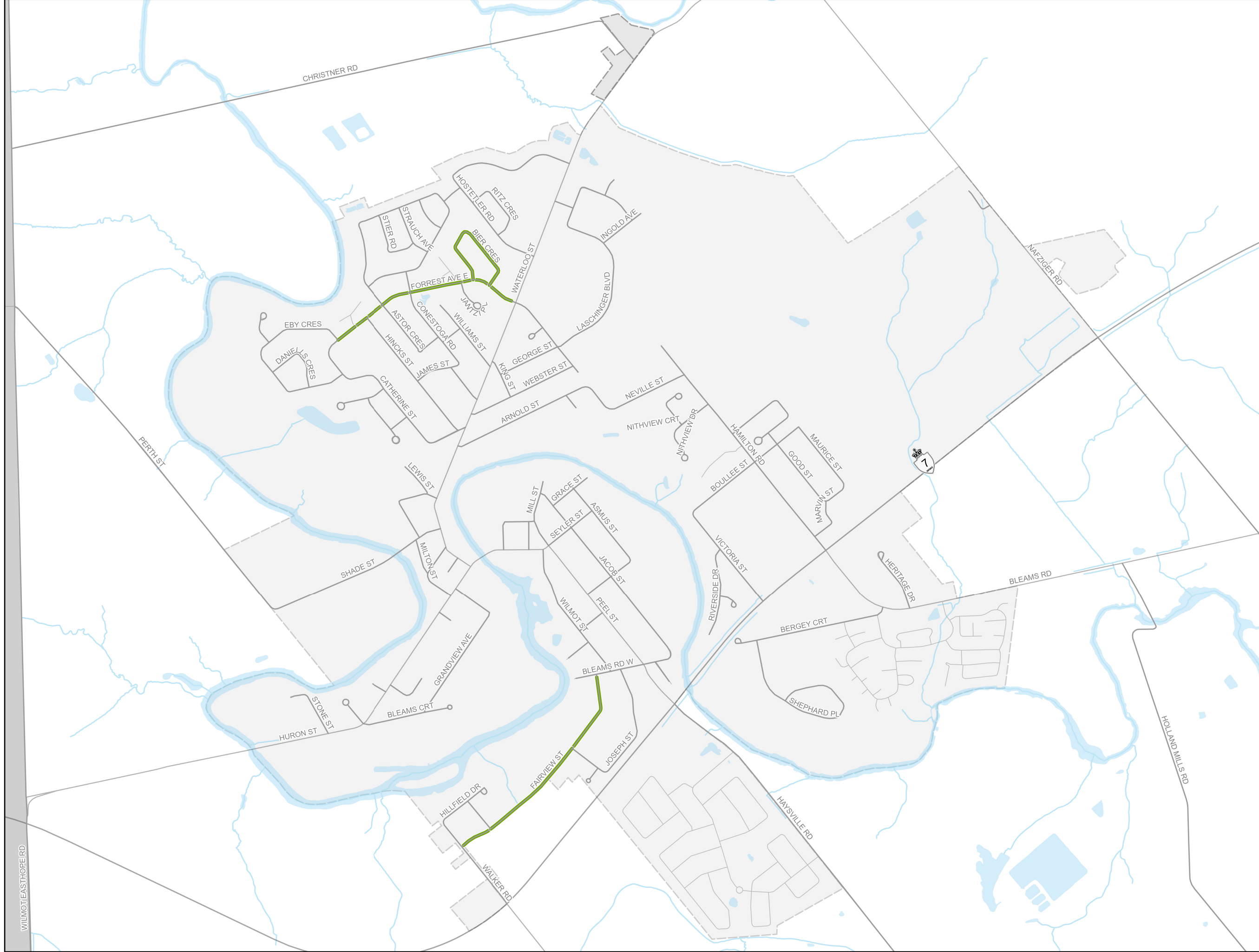
March 2026



0 0.13 0.25 0.5 km



Legend
Hot Mix Locations 2026
— Partial Depth Asphalt Removal (40mm)



The map is created from a subset of data from the Wilmot Geographic Information System (GIS) database. The Township of Wilmot makes no claims, no representations, and no warranties, express or implied, concerning the validity (express or implied), the reliability or the accuracy of the GIS data and GIS data products furnished by the Township, including the implied validity of any uses of such data.



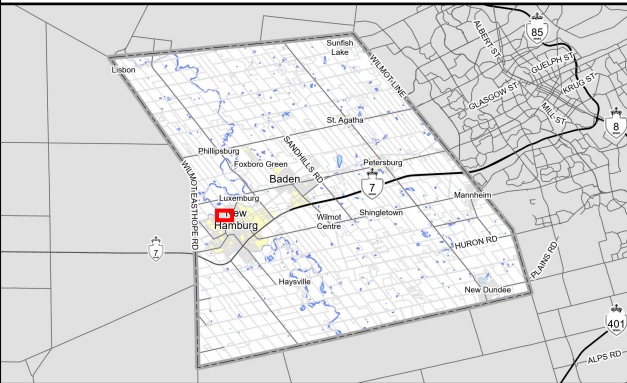
DEPARTMENT OF INFRASTRUCTURE SERVICES

Hot Mix 2026 Forrest Ave E&W, Bier Cres New Hamburg

March 2026




0 0.03 0.05 0.1 km



Legend

Hot Mix Locations 2026

 Partial Depth Asphalt Removal (40mm)



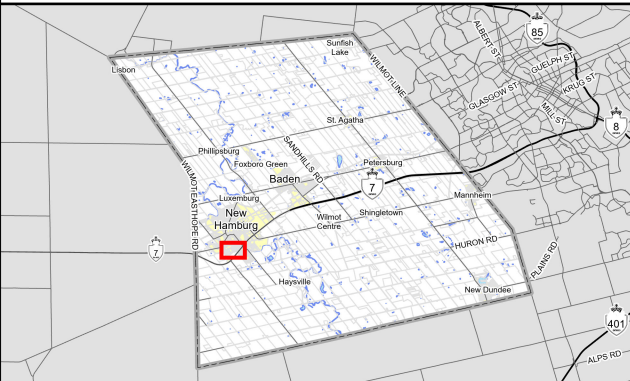
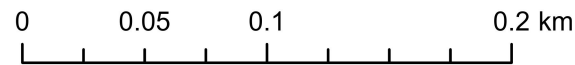
- NOTES:**
1. The limits of concrete sidewalk and concrete curb shall be marked in the field by the Inspector or Contract Administrator.
 2. All structure adjustments shall be marked in the field by the Inspector or Contract Administrator.
 3. Tactile warning plates shall be installed at all pedestrian crossings. Where tactile warning plates currently exist, they shall remain in place unless otherwise directed by the Inspector or Contract Administrator.
 4. All pavement markings shall be reinstated to match existing conditions unless otherwise specified.



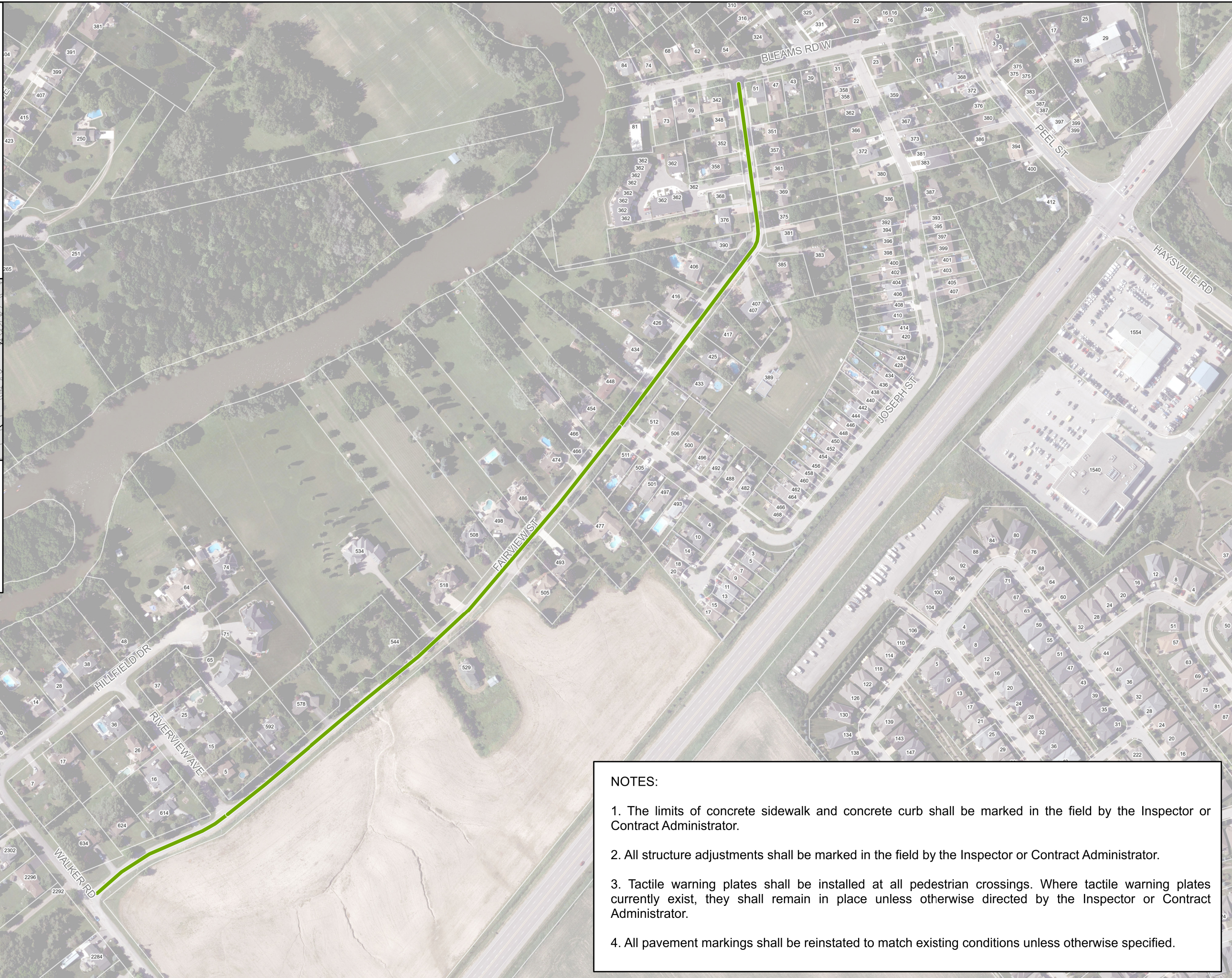
DEPARTMENT OF INFRASTRUCTURE SERVICES

Provisional 2026 Hot Mix Fairview St, New Hamburg

March 2026



- Legend**
Hot Mix Locations 2026
- Partial Depth Asphalt Removal (40mm)



- NOTES:**
1. The limits of concrete sidewalk and concrete curb shall be marked in the field by the Inspector or Contract Administrator.
 2. All structure adjustments shall be marked in the field by the Inspector or Contract Administrator.
 3. Tactile warning plates shall be installed at all pedestrian crossings. Where tactile warning plates currently exist, they shall remain in place unless otherwise directed by the Inspector or Contract Administrator.
 4. All pavement markings shall be reinstated to match existing conditions unless otherwise specified.