

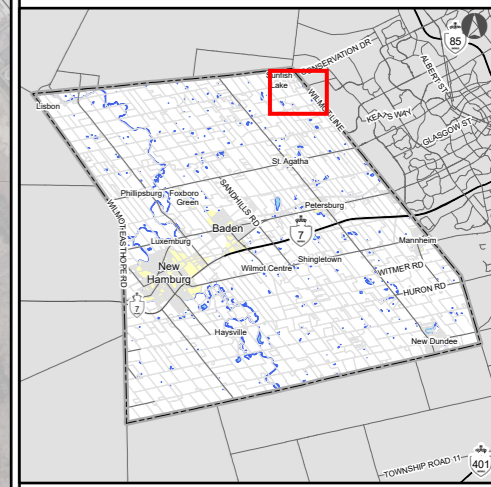
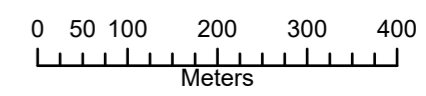


DEPARTMENT OF INFRASTRUCTURE SERVICES





Wilmot Line & Carmel-Koch Road

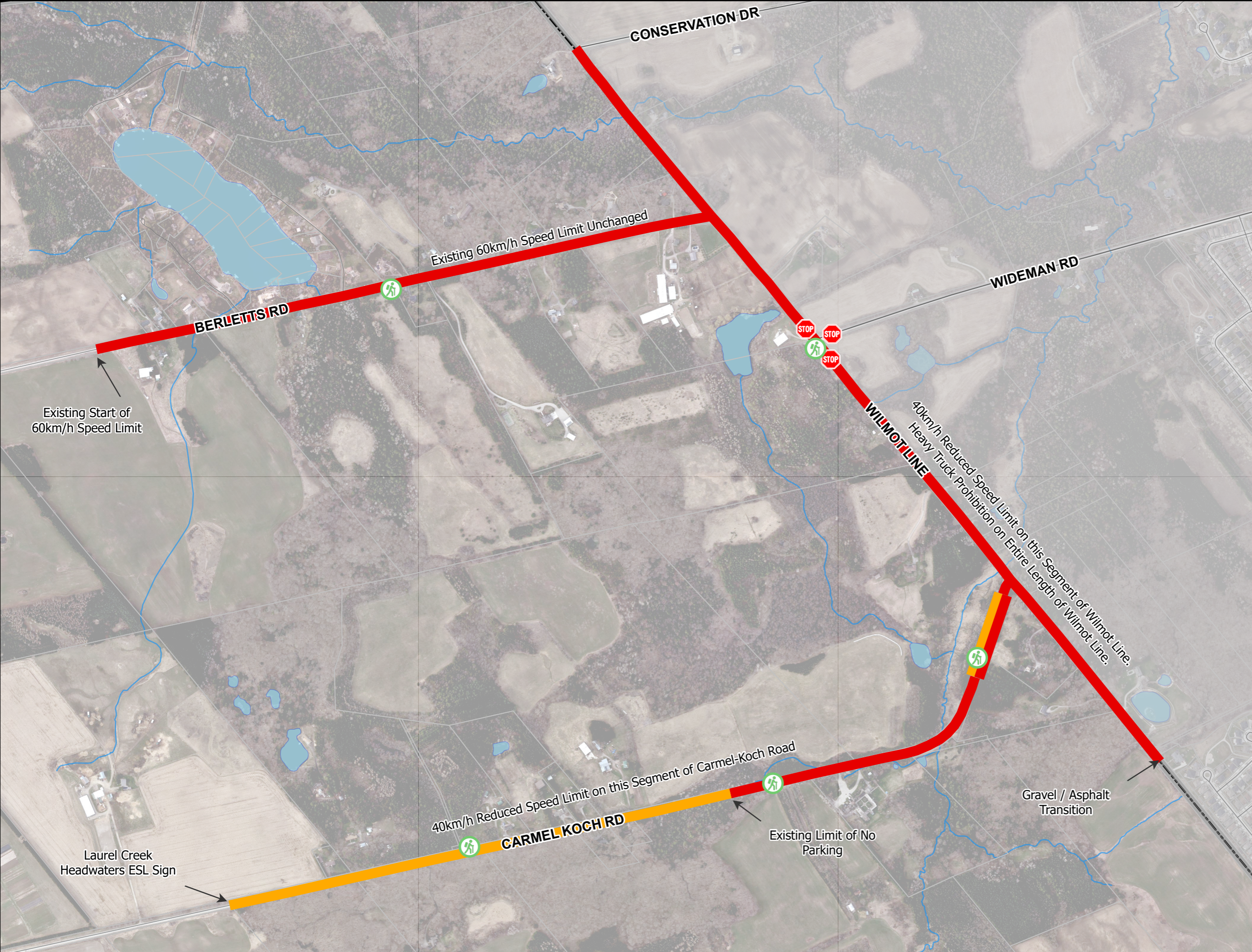
Parking and Trail Heads

October 2024



Legend

-  Trail Access Point
-  New Three-Way Stop
-  No Parking All Year
-  No Parking November to April



The map is created from a subset of data from the Wilmot Geographic Information System (GIS) database. The Township of Wilmot makes no claims, no representations, and no warranties, express or implied, concerning the validity (express or implied), the reliability or the accuracy of the GIS data and GIS data products furnished by the Township, including the implied validity of any uses of such data.

Document Path: W:\PWE Mapping Requests\Internal\2024\10-01-Carmel-Koch Rd Trail Head Parking\MAP-2024-10-01-Carmel-Koch Trail Heads.aprx